

CERTIFICATE OF ANALYSIS

Product Name	Alpha-MSH peptide, Cat.#:302923
Lot No.	MTFA31911-1008
Sequence	SYAMEHFRWGKPV-NH2
Dissolution condition	100%H2O
Length	13AA
Modification	N/A
Molecular Weight (MW)	1606.84
Storage	-20°C

Test Items	Specifications	Results
MW by MS	1606.50	Conforms
Purity by HPLC	>95%	97.269%
Peptide content	N/A	N/A
Moisture content	N/A	N/A
Acetic acid content	N/A	N/A
Appearance	White to off-white lyophilized powder	Conforms
Quantity	20mg	5.0mg*4

NovoPro Bioscience Inc. (hereafter NovoPro) warrants material of said quality at the time of sale. It is the sole responsibility of the customers to determine the adequacy of all materials for any intended or specific purpose or use. NovoPro's sole obligation is to replace the material up to the extent of the purchase price. This warranty applies only to products in original packaging and does not apply to a product which has been tampered with or altered in any way in or which has been misused or damaged by accident or negligence. All claims must be received writing (by fax or email) within 30 days from date when product arrive at the destination city and failure to do so shall constitute a waiver by customers for any and all such claims.

Certified by:



Quality Assurance Department

Oct/10/2024



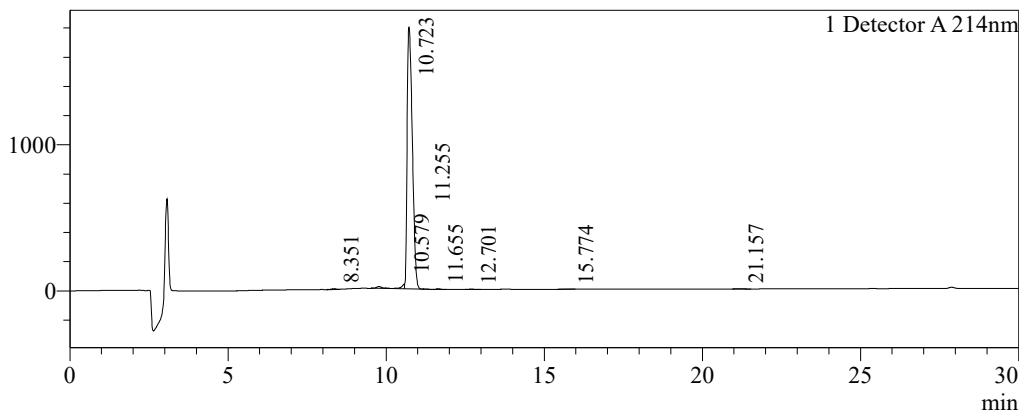
Sample Information

Order ID :MTFA31911
 Name :Alpha-MSH peptide, Cat.#:302923
 Sequence :SYAMEHFRWGKPV-NH2
 Lot. No :MTFA31911-1008
 Pump A :0.1%Trifluoroacetic in 100% water
 Pump B :0.1%Trifluoroacetic in 100% acetonitrile
 Total Flow :1ml/min
 Wavelength :214nm
 Analytical column type :Kromasil 100-5-C18 (4.6*250mm*5 μm)
 Dissolution method :100%H2O
 Inj. Volume : 25ul

Time	Module	Action	Value
0.01	Pumps	B.Conc	20
30.00	Pumps	B.Conc	50
33.00	Pumps	B.Conc	100
38.00	Pumps	B.Conc	100
40.00	Pumps	B.Conc	20
50.00	Controller	Stop	

Chromatogram

mV

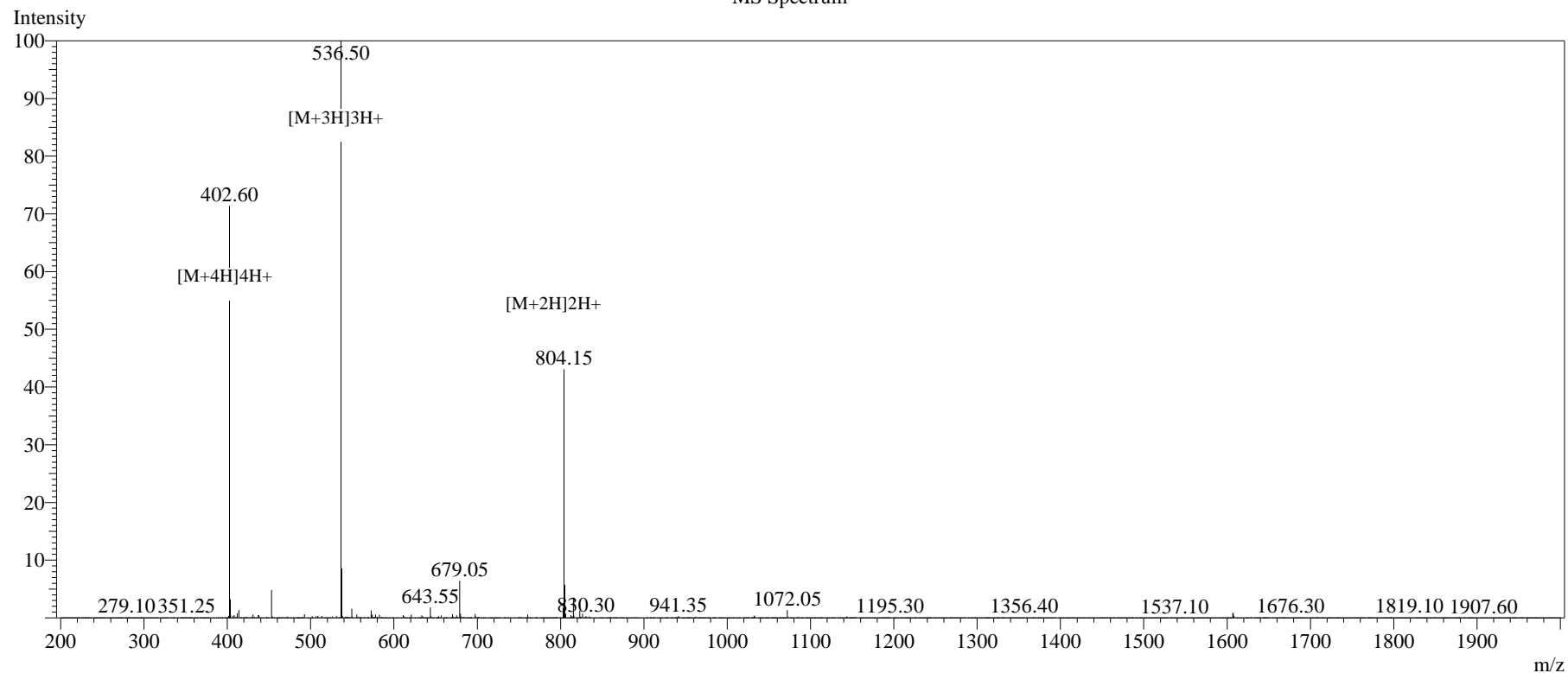


Peak Table

Detector A 214nm

Peak#	Ret. Time	Area	Height	Area%
1	8.351	41668	4438	0.197
2	10.579	423338	32173	2.003
3	10.723	20554842	1791569	97.269
4	11.255	16355	2253	0.077
5	11.655	42405	5373	0.201
6	12.701	10512	1229	0.050
7	15.774	13345	621	0.063
8	21.157	29491	2244	0.140
Total		21131954	1839900	100.000

MS Spectrum



Sample Information

Dissolution method	:15% ACN+85% H ₂ O	Interface	:ESI	Prerod Bias	:+4.5kv
Date Acquired	:2024/10/09 11:21:54	Nebulizing Gas Flow	:1.50L/min	Detector	:-0.2kv
Injection Volume	:0.2ul	CDL Temp	:250°C	T.Flow	:0.2ml/min
Block Temp	:200	CDL Volt	:0v	B.conc	:50% H ₂ O/50% MEOH

Order ID	:MTFA31911
Name	:Alpha-MSH peptide, Cat. #:302923
Sequence	:SYAMEHFRWGKPV-
Lot.No	NH2 :MTFA31911-1008
Theoretical	:1606.84
Observed	:1606.50