

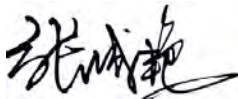
CERTIFICATE OF ANALYSIS

Product Name	BMP-2 derived peptide, Cat.#: 318975
Lot No.	MTFA30339-0731
Sequence	KIPKASSVPTELSAISTLYLGGC-NH2
Dissolution condition	100%H2O
Length	23AA
Modification	N/A
Molecular Weight (MW)	2334.71
Storage	-20°C

Test Items	Specifications	Results
MW by MS	2334.21	Conforms
Purity by HPLC	>95%	95.864%
Peptide Content	N/A	N/A
Moisture content	N/A	N/A
Acetic acid content	N/A	N/A
Appearance	White to off-white lyophilized powder	Conforms
Quantity	10mg	1.0mg*10

NovoPro Bioscience Inc. (hereafter NovoPro) warrants material of said quality at the time of sale. It is the sole responsibility of the customers to determine the adequacy of all materials for any intended or specific purpose or use. NovoPro's sole obligation is to replace the material up to the extent of the purchase price. This warranty applies only to products in original packaging and does not apply to a product which has been tampered with or altered in any way in or which has been misused or damaged by accident or negligence. All claims must be received writing (by fax or email) within 30 days from date when product arrive at the destination city and failure to do so shall constitute a waiver by customers for any and all such claims.

Certified by:



Quality Assurance Department

Aug/16/2023

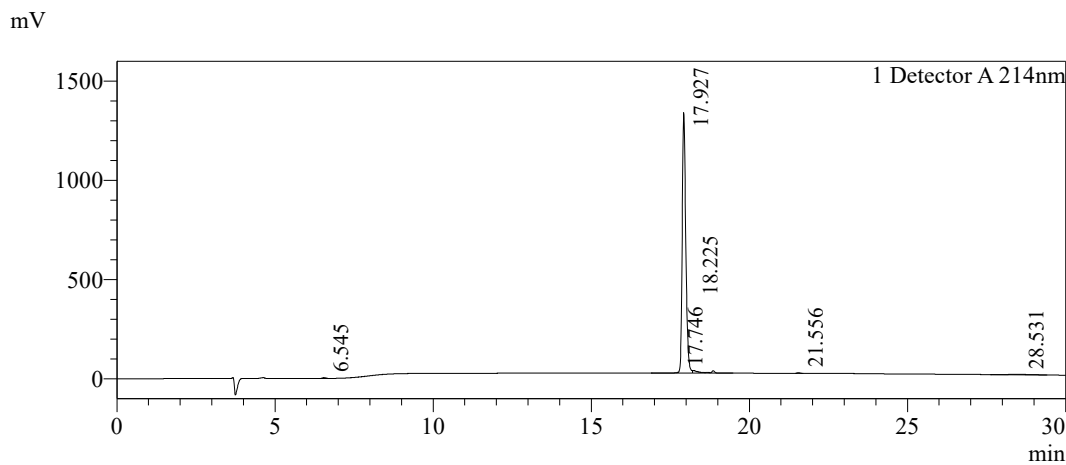


Sample Information

Order ID :MTFA30339
 Name :BMP-2 derived peptide
 Sequence :KIPKASSVPTELSAISTLYLGGC-NH2
 Lot. No :MTFA30339-0731
 Pump A :0.1%Trifluoroacetic in 100% water
 Pump B :0.1%Trifluoroacetic in 100% acetonitrile
 Total Flow :1ml/min
 Wavelength :214nm
 Analytical column type :Shim-pack GIST C18(4.6*250mm*5um)
 Dissolution method :100%H2O
 Inj. Volume : 25ul

Time	Module	Action	Value
0.01	Pumps	B.Conc	25
30.00	Pumps	B.Conc	55
33.00	Pumps	B.Conc	100
38.00	Pumps	B.Conc	100
40.00	Pumps	B.Conc	25
50.00	Controller	Stop	

Chromatogram

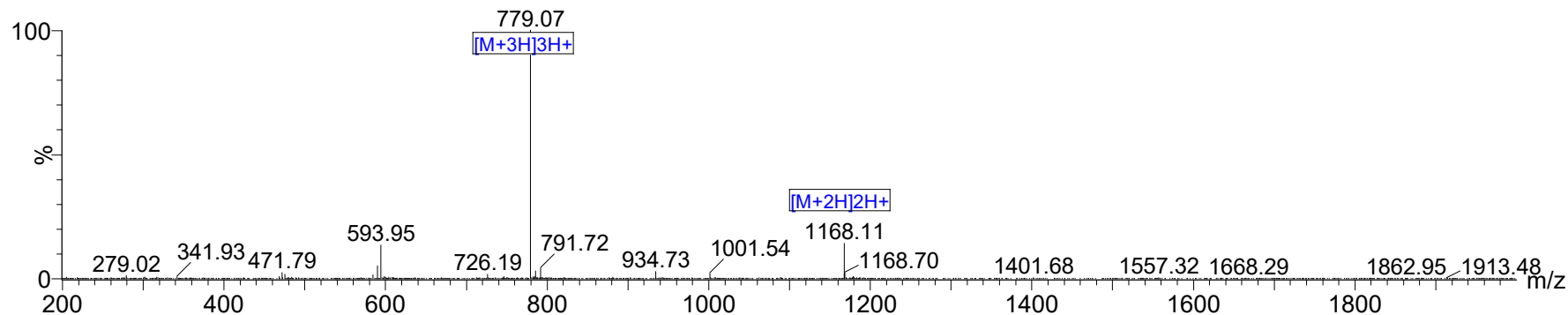


Peak Table

Detector A 214nm

Peak#	Ret. Time	Area	Height	Area%
1	6.545	26001	3771	0.242
2	17.746	32352	4025	0.301
3	17.927	10291605	1312903	95.864
4	18.225	280250	12829	2.610
5	21.556	17699	2984	0.165
6	28.531	87734	1885	0.817
Total		10735640	1338397	100.000

MS Spectrum

 Positive
Intensity


Dissolution method	:15%ACN+85%H2O	Interface	:ESI	Prerod Bias	:+4.5kv
Date Acquired	:8/15/2023 4:08:37	Nebulizing Gas Flow	:1.50L/min	Detector	:-0.2kv
Injection Volume	:0.2ul	CDL Temp	:250C	T.Flow	:0.2ml/min
Block Temp	:200	CDL Volt	:0v	B.conc	:50%H2O/50%MEOH

Order ID	: MTF A30339
Name	: BMP-2 derived peptide
Sequence	: KIPKASSVPTELSAISTLYLGGC-NH2
Lot.No	: MTF A30339-0731
Theoretical	: 2334.71
Observed	: 2334.21