

CERTIFICATE OF ANALYSIS

Product Name	Caerulein (desulfated) peptide, Cat#: 319579
Lot No.	MTFA31461-0611
Sequence	pGlu-QDYTGWMDF-NH2
Dissolution condition	5%HCOOH+15%ACN+80%H2O
Length	10AA
Modification	N/A
Molecular Weight (MW)	1271.38
Storage	-20°C

Test Items	Specifications	Results
MW by MS	1271.90	Conforms
Purity by HPLC	>95%	95.184%
Peptide content	N/A	N/A
Moisture content	N/A	N/A
Acetic acid content	N/A	N/A
Appearance	White to off-white lyophilized powder	Conforms
Quantity	15mg	5.0mg*3

NovoPro Bioscience Inc. (hereafter NovoPro) warrants material of said quality at the time of sale. It is the sole responsibility of the customers to determine the adequacy of all materials for any intended or specific purpose or use. NovoPro's sole obligation is to replace the material up to the extent of the purchase price. This warranty applies only to products in original packaging and does not apply to a product which has been tampered with or altered in any way in or which has been misused or damaged by accident or negligence. All claims must be received writing (by fax or email) within 30 days from date when product arrive at the destination city and failure to do so shall constitute a waiver by customers for any and all such claims.

Certified by:



Quality Assurance Department

Jun/27/2024

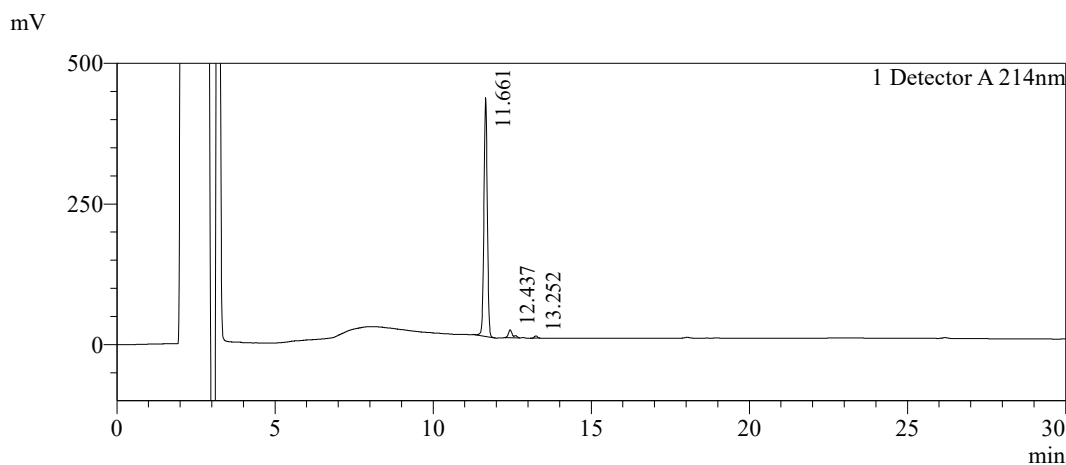


Sample Information

Order ID : MTF31461
 Name : Caerulein (desulfated) peptide, Cat#: 319579
 Sequence : pGlu-QDYTGWMDF-NH2
 Lot. No : MTF31461-0611
 Pump A : 0.1% Trifluoroacetic in 100% water
 Pump B : 0.1% Trifluoroacetic in 100% acetonitrile
 Total Flow : 1ml/min
 Wavelength : 214nm
 Analytical column type : Kromasil 100-5-C18 (4.6*250mm*5 μm)
 Dissolution method : 15% HCOOH+15% ACN+80% H2O
 Inj. Volume : 25ul

Time	Module	Action	Value
0.01	Pumps	B.Conc	25
30.00	Pumps	B.Conc	55
33.00	Pumps	B.Conc	100
38.00	Pumps	B.Conc	100
40.00	Pumps	B.Conc	25
50.00	Controller	Stop	

Chromatogram

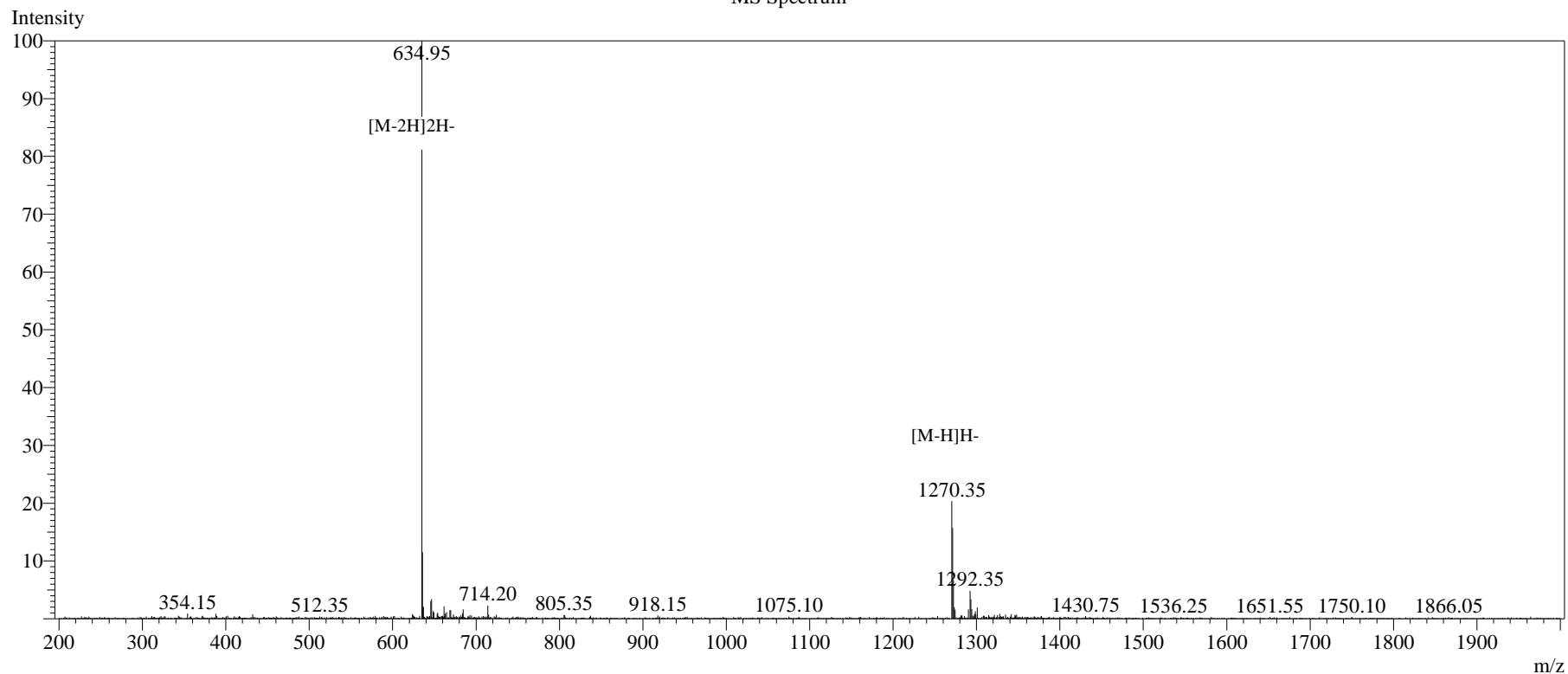


Peak Table

Detector A 214nm

Peak#	Ret. Time	Area	Height	Area%
1	11.661	3152883	424958	95.184
2	12.437	133008	13980	4.015
3	13.252	26521	3974	0.801
Total		3312412	442912	100.000

MS Spectrum



Sample Information

Dissolution method	:50% ACN+50% H ₂ O	Interface	:ESI	Prerod Bias	:+4.5kv
Date Acquired	:2024/06/26 13:39:10	Nebulizing Gas Flow	:1.50L/min	Detector	:-0.2kv
Injection Volume	:0.2ul	CDL Temp	:250°C	T.Flow	:0.2ml/min
Block Temp	:200	CDL Volt	:0v	B.conc	:50% H ₂ O/50% MEOH

Order ID	:MTFA31461
Name	:Caerulein (desulfated) peptide, Cat#: 319579
Sequence	:pGlu-QDYTGWMDF-NH ₂
Lot.No	:MTFA31461-0611
Theoretical	:1271.38
Observed	:1271.90