

## CERTIFICATE OF ANALYSIS

Product Name	Crustacean Cardioactive Peptide, CCAP, Cat.# 307571, TFA removed
Lot No.	GTA34685-4-1103
Sequence	PFC*NAFTGC*-NH <sub>2</sub> (Acetate Salt)
Dissolution condition	100%H <sub>2</sub> O
Length	9AA
Modification	acetate salt; disulfide bond: Cys3-Cys9
Molecular Weight (MW)	956.09
Storage	-20°C

Test Items	Specifications	Results
MW by MS	955.70	Conforms
Purity by HPLC	>95%	99.004%
Peptide Content	N/A	N/A
Moisture content	N/A	N/A
Acetic acid content	N/A	N/A
Appearance	White to off-white lyophilized powder	Conforms
Quantity	10mg	5.0mg*2

NovoPro Bioscience Inc. (hereafter NovoPro) warrants material of said quality at the time of sale. It is the sole responsibility of the customers to determine the adequacy of all materials for any intended or specific purpose or use. NovoPro's sole obligation is to replace the material up to the extent of the purchase price. This warranty applies only to products in original packaging and does not apply to a product which has been tampered with or altered in any way in or which has been misused or damaged by accident or negligence. All claims must be received writing (by fax or email) within 30 days from date when product arrive at the destination city and failure to do so shall constitute a waiver by customers for any and all such claims.

Certified by:



Quality Assurance Department

Nov./24/2022

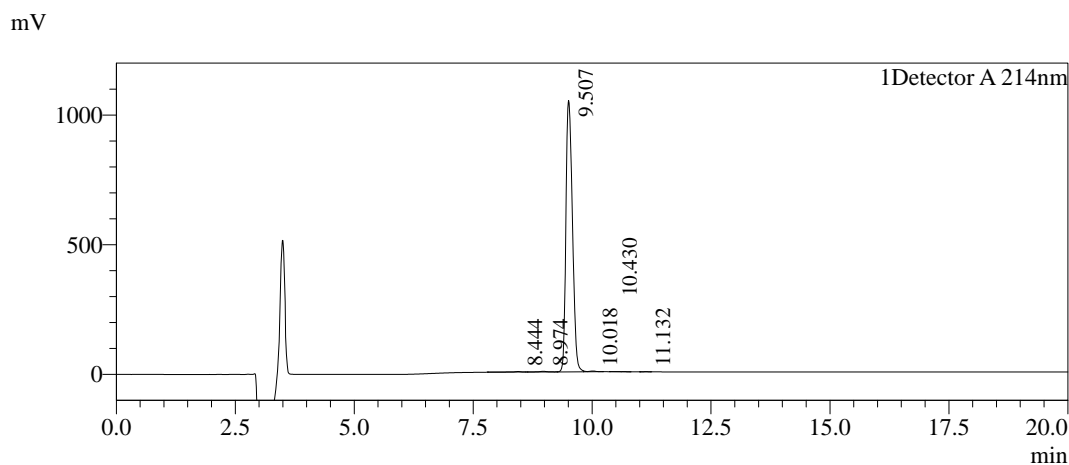


### Sample Information

Order ID :GTA34685-4  
 Name :Crustacean Cardioactive Peptide, CCAP, Cat.# 307571,TFA removed  
 Sequence :PFC\*NAFTGC\*-NH2(Acetate Salt)  
 Lot. No :GTA34685-4-1103  
 Pump A :0.1% Trifluoroacetic in 100% water  
 Pump B :0.1% Trifluoroacetic in 100% acetonitrile  
 Total Flow :1ml/min  
 Wavelength :214nm  
 Analytical column type :YMC-Triart C18(4.6\*250mm\*5um)  
 Dissolution method :100% H2O  
 Inj. Volume : 25ul  

Time	Module	Action	Value
0.01	Pumps	B.Conc	25
20.00	Pumps	B.Conc	45
33.00	Pumps	B.Conc	100
38.00	Pumps	B.Conc	100
40.00	Pumps	B.Conc	25
50.00	Controller	Stop	

### Chromatogram

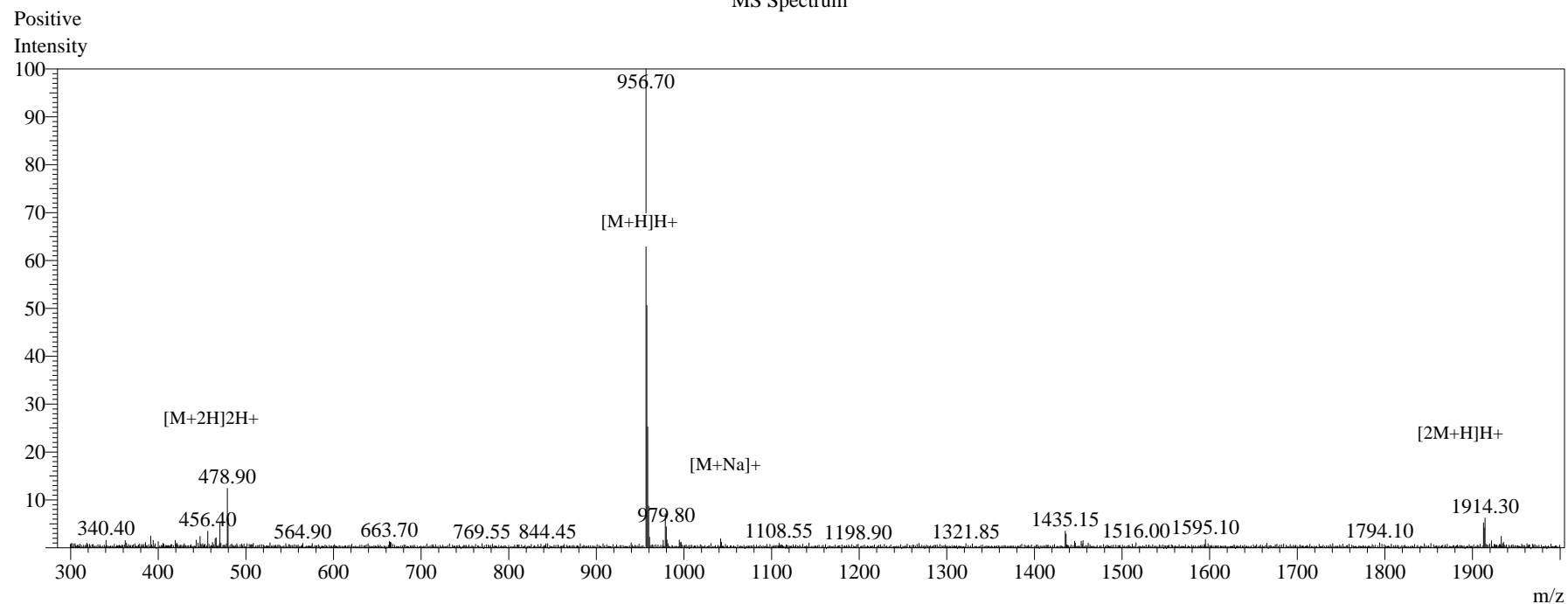


### Peak Table

Detector A 214nm

Peak#	Ret. Time	Area	Height	Area%
1	8.444	24538	2165	0.244
2	8.974	31022	2678	0.309
3	9.507	9946072	1046296	99.004
4	10.018	34798	3008	0.346
5	10.430	5390	228	0.054
6	11.132	4333	664	0.043
Total		10046153	1055039	100.000

# MS Spectrum



## Sample Information

Dissolution method	:15% ACN+85% H <sub>2</sub> O	Interface	:ESI	Prerod Bias	:+4.5kv
Date Acquired	:2022/11/23 10:55:53	Nebulizing Gas Flow	:1.50L/min	Detector	:-0.2kv
Injection Volume	:0.2ul	CDL Temp	:250C	T.Flow	:0.2ml/min
Block Temp	:200	CDL Volt	:0v	B.conc	:50% H <sub>2</sub> O/50% MEOH
Order ID	:GTA34685-4				
Name	:Crustacean Cardioactive Peptide CCAP,Cat.# 307571,TFA removed				
Sequence	:PFC*NAFTGC*-NH <sub>2</sub> (Acetate Salt)				
Lot.No	:GTA34685-4-1103				
Theoretical	:956.09				
Observed	:955.70				