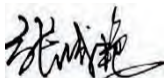

CERTIFICATE OF ANALYSIS

Product Name	DCD-1L peptide, Cat.#: 319752 (TFA removed)
Lot No.	MTFA32220-1212
Sequence	SSLLEKGLDGAKKAVGGLGKLGKDAVEDLESVGKGAVHDVK DVLDSVL (Acetate Salt)
Dissolution condition	100%H ₂ O
Length	48AA
Modification	acetate salt
Molecular Weight (MW)	4818.42
Storage	-20°C

Test Items	Specifications	Results
MW by MS	4818.80	Conforms
Purity by HPLC	>95%	97.538%
Peptide content	N/A	N/A
Moisture content	N/A	N/A
Acetic acid content	N/A	N/A
Appearance	White to off-white lyophilized powder	Conforms
Quantity	10mg	5.0mg*2

NovoPro Bioscience Inc. (hereafter NovoPro) warrants material of said quality at the time of sale. It is the sole responsibility of the customers to determine the adequacy of all materials for any intended or specific purpose or use. NovoPro's sole obligation is to replace the material up to the extent of the purchase price. This warranty applies only to products in original packaging and does not apply to a product which has been tampered with or altered in any way in or which has been misused or damaged by accident or negligence. All claims must be received writing (by fax or email) within 30 days from date when product arrive at the destination city and failure to do so shall constitute a waiver by customers for any and all such claims.

Certified by:



Quality Assurance Department

Dec/18/2024

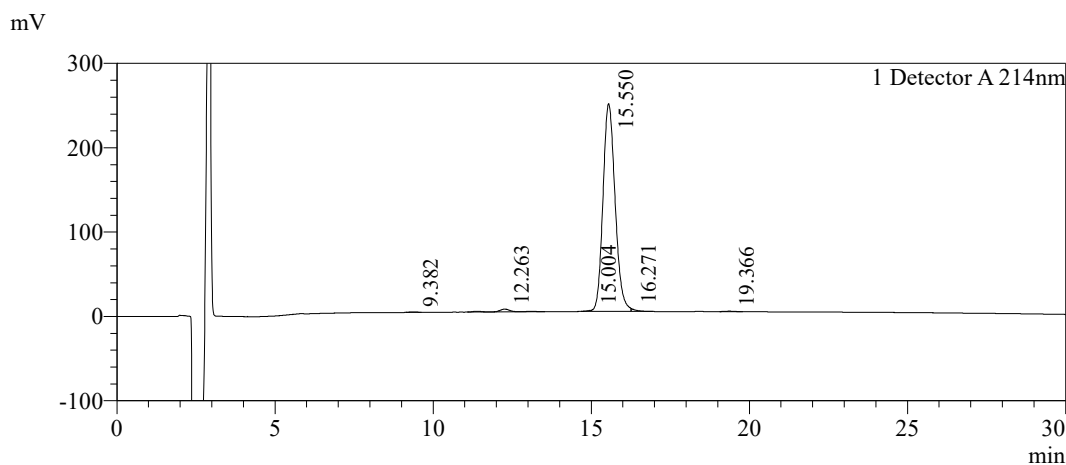


Sample Information

Order ID :MTFA32220
 Name :DCD-1L peptide
 Sequence :SSLLEKGLDGAKKAVGGLGKLGKDAVEDLESVGKGAVHD
 VKDVLDSVL (Acetate Salt)
 Lot. No :MTFA32220-1213
 Pump A :0.1%Trifluoroacetic in 100% water
 Pump B :0.1%Trifluoroacetic in 100% acetonitrile
 Total Flow :1ml/min
 Wavelength :214nm
 Analytical column type :Kromasil 100-5-C18 (4.6*250mm*5 µm)
 Dissolution method :100%H2O
 Inj. Volume : 35ul

Time	Module	Action	Value
0.01	Pumps	B.Conc	35
30.00	Pumps	B.Conc	65
33.00	Pumps	B.Conc	100
38.00	Pumps	B.Conc	100
40.00	Pumps	B.Conc	35
50.00	Controller	Stop	

Chromatogram

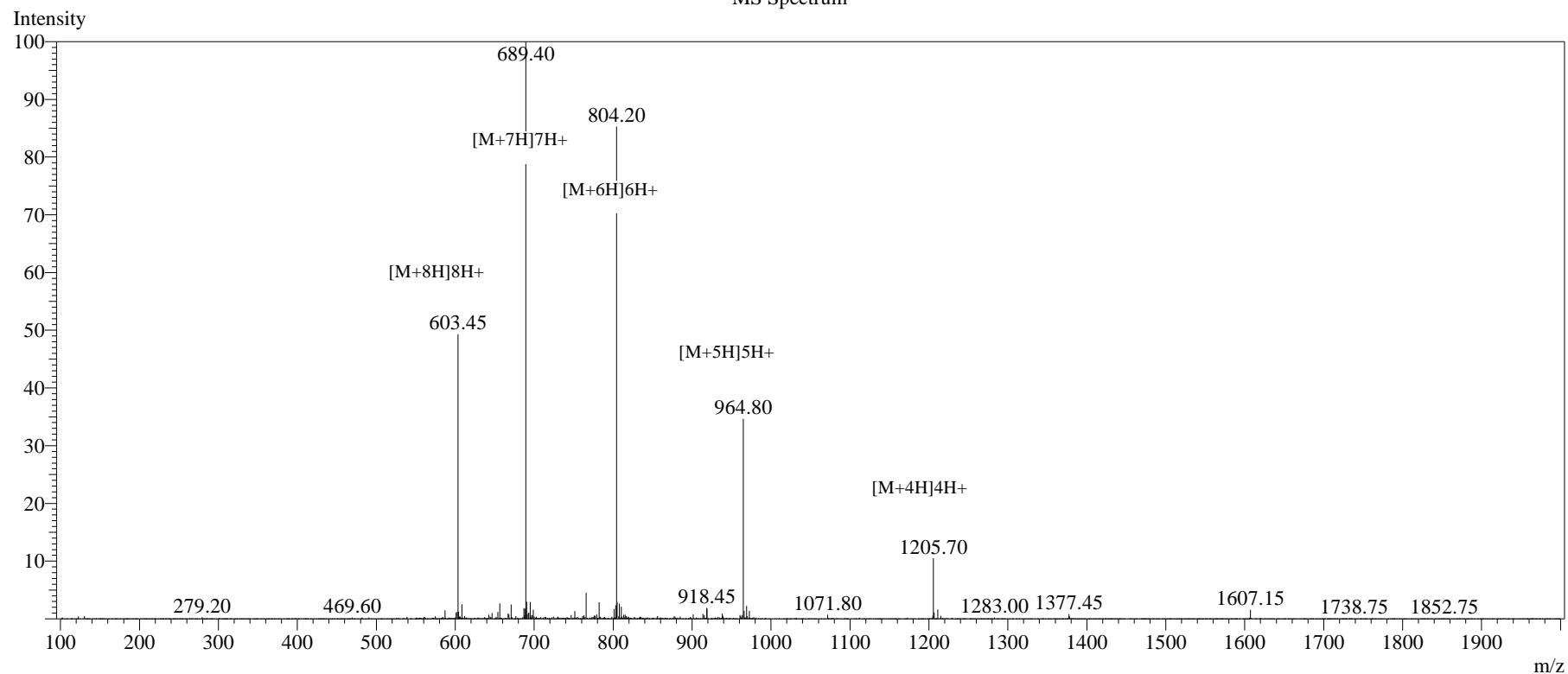


Peak Table

Detector A 214nm

Peak#	Ret. Time	Area	Height	Area%
1	9.382	7256	462	0.108
2	12.263	99337	3313	1.476
3	15.004	12255	1406	0.182
4	15.550	6563376	246355	97.538
5	16.271	35218	3531	0.523
6	19.366	11632	543	0.173
Total		6729074	255610	100.000

MS Spectrum



Sample Information

Dissolution method	:15% ACN+85% H ₂ O	Interface	:ESI	Prerod Bias	:+4.5kv
Date Acquired	:2024/12/17 14:49:40	Nebulizing Gas Flow	:1.50L/min	Detector	:-0.2kv
Injection Volume	:0.2ul	CDL Temp	:250°C	T.Flow	:0.2ml/min
Block Temp	:200	CDL Volt	:0v	B.conc	:50% H ₂ O/50% MEOH

Order ID	:MTFA32220
Name	:DCD-1L peptide
Sequence	:SSLLEKGLDGAKKAVGGLGKLGKDAVEDLESVGKGAHVHDVKDVLDSVL (Acetate Salt)
Lot.No	:MTFA32220-1212
Theoretical	:4818.42
Observed	:4818.80