

## CERTIFICATE OF ANALYSIS

<b>Product Name</b>	Glicentin (By similarity) peptide, Cat.#: 316876
<b>Lot No.</b>	MTFA31276-0419
<b>Sequence</b>	RSLQDTEEKSRFSASQADPLSDPDQMNEKDKRHSQGTFTSDYS KYLDSRRAQDFVQWLMNTRNRNIA
<b>Dissolution condition</b>	100%H <sub>2</sub> O
<b>Length</b>	69AA
<b>Modification</b>	N/A
<b>Molecular Weight (MW)</b>	8100.60
<b>Storage</b>	-20°C

Test Items	Specifications	Results
MW by MS	8104.00	Conforms
Purity by HPLC	>90%	90.012%
Peptide content	N/A	N/A
Moisture content	N/A	N/A
Acetic acid content	N/A	N/A
Appearance	White to off-white lyophilized powder	Conforms
Quantity	5mg	5.0mg

NovoPro Bioscience Inc. (hereafter NovoPro) warrants material of said quality at the time of sale. It is the sole responsibility of the customers to determine the adequacy of all materials for any intended or specific purpose or use. NovoPro's sole obligation is to replace the material up to the extent of the purchase price. This warranty applies only to products in original packaging and does not apply to a product which has been tampered with or altered in any way in or which has been misused or damaged by accident or negligence. All claims must be received writing (by fax or email) within 30 days from date when product arrive at the destination city and failure to do so shall constitute a waiver by customers for any and all such claims.

Certified by:



Apr/23/2024

Quality Assurance Department

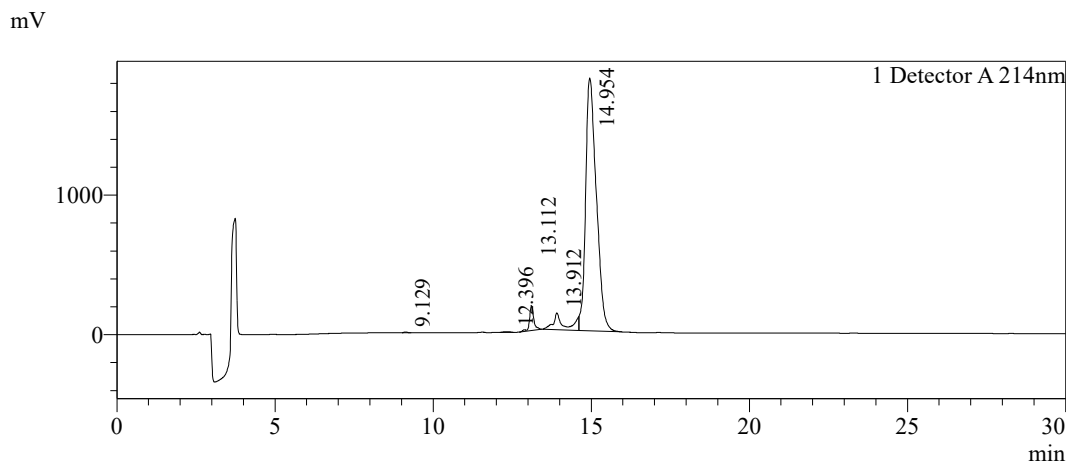


Sample Information

Order ID :MTFA31276  
 Name :Glicentin (By similarity) peptide  
 Sequence :RSLQDTEEKSRFSASQADPLSDPDQMNE DKRHSQGTFTS  
 DYSKYLDSRRAQDFVQWLMNTKRNRNIA  
 Lot. No :MTFA31276-0419  
 Pump A :0.1%Trifluoroacetic in 100% water  
 Pump B :0.1%Trifluoroacetic in 100% acetonitrile  
 Total Flow :1ml/min  
 Wavelength :214nm  
 Analytical column type :Kromasil 100-5-C18 (4.6\*250mm\*5 μm)  
 Dissolution method :100%H2O  
 Inj. Volume : 50ul

Time	Module	Action	Value
0.01	Pumps	B.Conc	30
30.00	Pumps	B.Conc	60
33.00	Pumps	B.Conc	100
38.00	Pumps	B.Conc	100
40.00	Pumps	B.Conc	30
50.00	Controller	Stop	

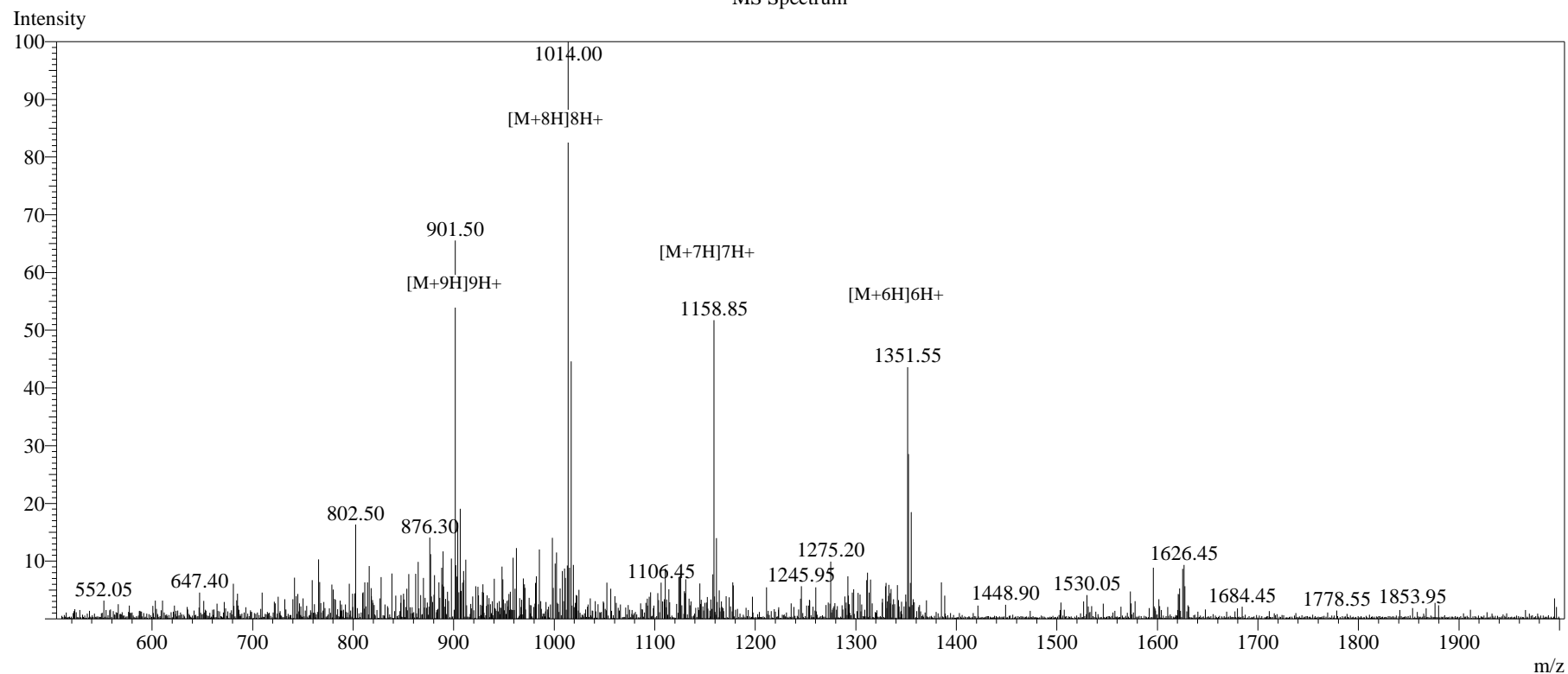
Chromatogram



Peak Table

Detector A 214nm				
Peak#	Ret. Time	Area	Height	Area%
1	9.129	40399	5777	0.085
2	12.396	72065	4278	0.152
3	13.112	1687119	177352	3.555
4	13.912	2940624	120396	6.196
5	14.954	42717075	1808789	90.012
Total		47457283	2116592	100.000

## MS Spectrum



## Sample Information

Dissolution method	:15% ACN+85% H <sub>2</sub> O	Interface	:ESI	Prerod Bias	:+4.5kv
Date Acquired	:2024/02/26 16:05:57	Nebulizing Gas Flow	:1.50L/min	Detector	:-0.2kv
Injection Volume	:0.2ul	CDL Temp	:250°C	T.Flow	:0.2ml/min
Block Temp	:200	CDL Volt	:0v	B.conc	:50% H <sub>2</sub> O/50% MEOH

Order ID	:MTFA31276
Name	:Glicentin (By similarity) peptide
Sequence	:RSLQDTEEKSRFSASQADPLSDPDQMNE DKRHSQGTFTSDYSKYLD SRRAQDFVQWLMNTKRNRN NIA
Lot.No	:MTFA31276-0419
Theoretical	:8100.60
Observed	:8104.00