

---

**CERTIFICATE OF ANALYSIS**

<b>Product Name</b>	Growth hormone-releasing hormone (X. laevis) (Cat.#312602)
<b>Lot No.</b>	GTA34368-8-0712
<b>Sequence</b>	HVDAIFTNTYRKFLGQISARRYLQNM
<b>Dissolution condition</b>	100%H <sub>2</sub> O
<b>Length</b>	27AA
<b>Modification</b>	N/A
<b>Molecular Weight (MW)</b>	3274.78
<b>Storage</b>	-20°C

---

<b>Test Items</b>	<b>Specifications</b>	<b>Results</b>
<b>MW by MS</b>	3274.80	Conforms
<b>Purity by HPLC</b>	>95%	95.007%
<b>Peptide Content</b>	N/A	N/A
<b>Moisture content</b>	N/A	N/A
<b>Acetic acid content</b>	N/A	N/A
<b>Appearance</b>	White to off-white lyophilized powder	Conforms
<b>Quantity</b>	10mg	5.0mg*2

---

NovoPro Bioscience Inc. (hereafter NovoPro) warrants material of said quality at the time of sale. It is the sole responsibility of the customers to determine the adequacy of all materials for any intended or specific purpose or use. NovoPro's sole obligation is to replace the material up to the extent of the purchase price. This warranty applies only to products in original packaging and does not apply to a product which has been tampered with or altered in any way in or which has been misused or damaged by accident or negligence. All claims must be received writing (by fax or email) within 30 days from date when product arrive at the destination city and failure to do so shall constitute a waiver by customers for any and all such claims.

Certified by:



Quality Assurance Department

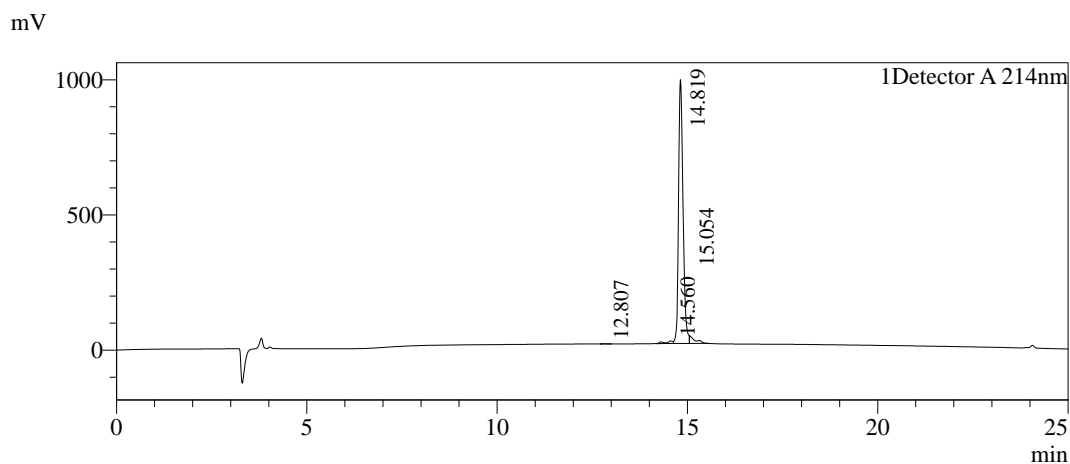
Aug/01/2022



### Sample Information

Order ID :GTA34368-8  
 Name :Growth hormone-releasing hormone peptide  
           (X. laevis)  
 Sequence :HVDAIFTNTYRKFLGQISARRYLQNM  
 Lot. No :GTA34368-8-0712  
 Pump A :0.1% Trifluoroacetic in 100% water  
 Pump B :0.1% Trifluoroacetic in 100% acetonitrile  
 Total Flow :1ml/min  
 Wavelength :214nm  
 Analytical column type :YMC-Triart C18(4.6\*250mm\*5um)  
 Dissolution method :100% H2O  
 Inj. Volume : 30ul  
 Time           Module           Action           Value  
 0.01           Pumps           B.Conc           25  
 25.00          Pumps           B.Conc           50  
 33.00          Pumps           B.Conc           100  
 38.00          Pumps           B.Conc           100  
 40.00          Pumps           B.Conc           25  
 50.00          Controller       Stop

### Chromatogram

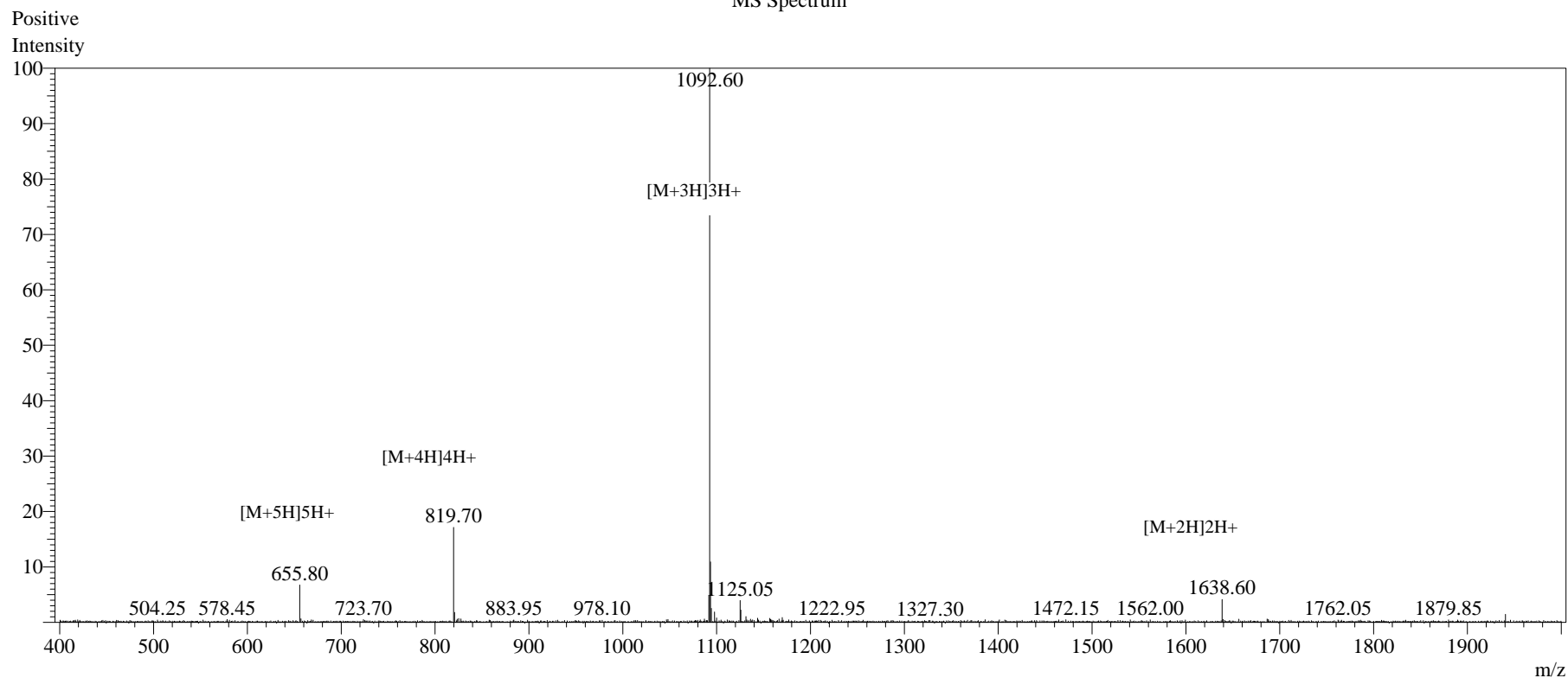


### Peak Table

Detector A 214nm

Peak#	Ret. Time	Area	Height	Area%
1	12.807	3394	553	0.040
2	14.560	131489	9709	1.565
3	14.819	7982061	975907	95.007
4	15.054	284633	28751	3.388
Total		8401578	1014920	100.000

## MS Spectrum



## Sample Information

Dissolution method	:15% ACN+85% H <sub>2</sub> O	Interface	:ESI	Prerod Bias	:+4.5kv
Date Acquired	:2022/07/29 11:08:12	Nebulizing Gas Flow	:1.50L/min	Detector	:-0.2kv
Injection Volume	:0.2ul	CDL Temp	:250C	T.Flow	:0.2ml/min
Block Temp	:200	CDL Volt	:0v	B.conc	:50% H <sub>2</sub> O/50% MEOH

Order ID	:GTA34368-8
Name	:Growth hormone-releasing hormone peptide (X. laevis)
Sequence	:HVD AIFTNTYRKFLGQISARRYLQNMM
Lot.No	:GTA34368-8-0712
Theoretical	:3274.78
Observed	:3274.80