


**CERTIFICATE OF ANALYSIS**

<b>Product Name</b>	Kisspeptin-10 Peptide, Cat.#: 316777
<b>Lot No.</b>	MTFA30200-0605
<b>Sequence</b>	YNWNSFGLRY-NH2
<b>Dissolution condition</b>	100%H2O
<b>Length</b>	10AA
<b>Modification</b>	N/A
<b>Molecular Weight (MW)</b>	1318.43
<b>Storage</b>	-20°C

<b>Test Items</b>	<b>Specifications</b>	<b>Results</b>
<b>MW by MS</b>	1317.86	Conforms
<b>Purity by HPLC</b>	>95%	98.800%
<b>Peptide Content</b>	N/A	N/A
<b>Moisture content</b>	N/A	N/A
<b>Acetic acid content</b>	N/A	N/A
<b>Appearance</b>	White to off-white lyophilized powder	Conforms
<b>Quantity</b>	100mg	5.0mg*20

NovoPro Bioscience Inc. (hereafter NovoPro) warrants material of said quality at the time of sale. It is the sole responsibility of the customers to determine the adequacy of all materials for any intended or specific purpose or use. NovoPro's sole obligation is to replace the material up to the extent of the purchase price. This warranty applies only to products in original packaging and does not apply to a product which has been tampered with or altered in any way in or which has been misused or damaged by accident or negligence. All claims must be received writing (by fax or email) within 30 days from date when product arrive at the destination city and failure to do so shall constitute a waiver by customers for any and all such claims.

Certified by:



Quality Assurance Department

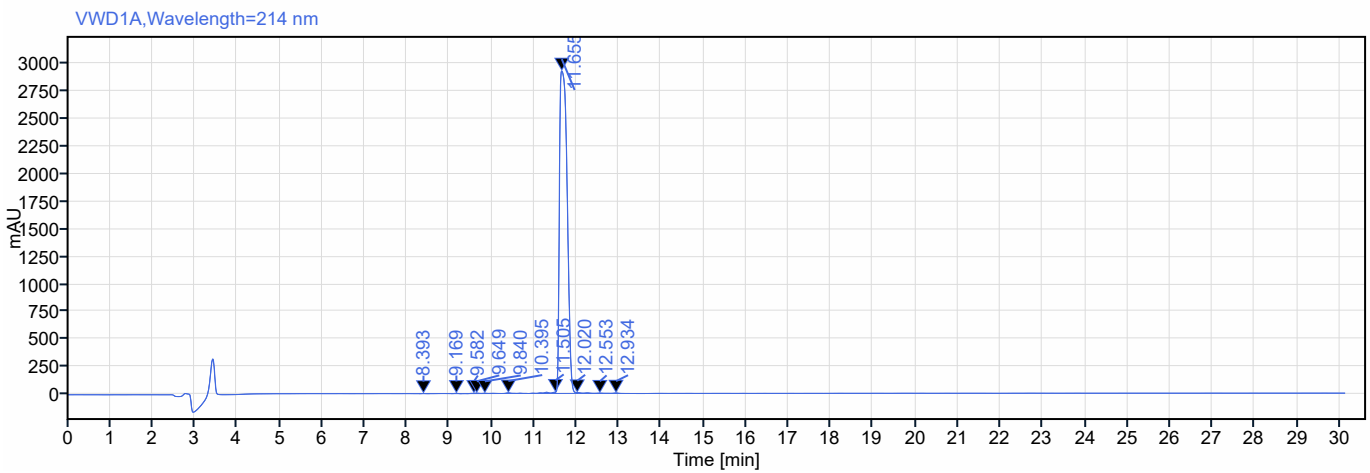
June/12/2023



# Single Injection Report



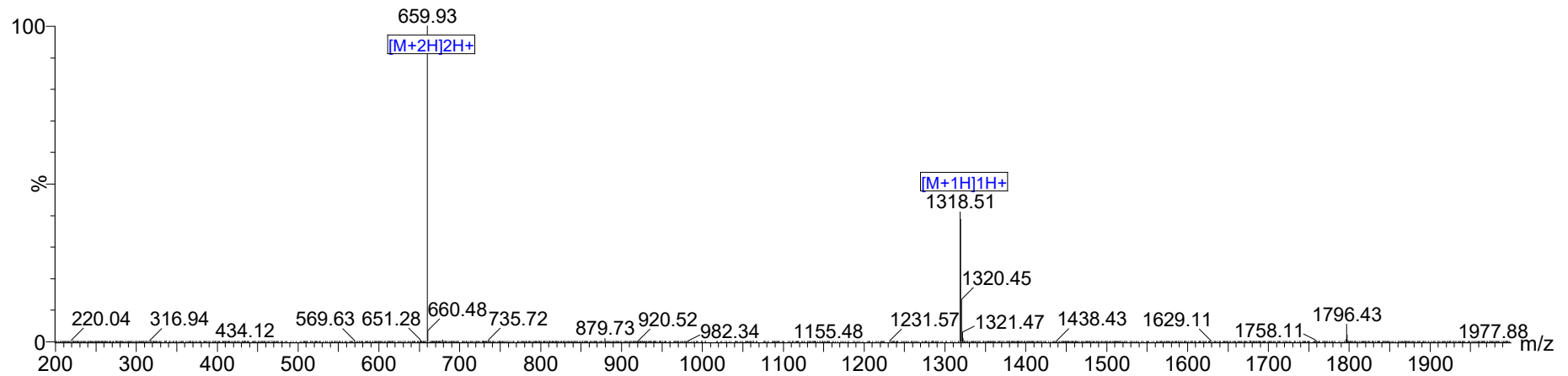
<b>Data file:</b>	MTFA30200p.dx	<b>Project Name:</b>	Kisspeptin-10 Peptide
<b>Sequence Name:</b>	Kisspeptin-10 Peptide	<b>Operator:</b>	admin
<b>Sample name:</b>	MTFA30200P	<b>Injection date:</b>	2023-06-09 10:45:13+08:00
<b>Instrument:</b>	1260-VWD	<b>Location:</b>	P1-A1
<b>Inj. volume:</b>	15.000	<b>Type:</b>	Sample
<b>Acq. method:</b>	20-40-50-30min.amx	<b>Sample amount:</b>	0.00
<b>Processing method:</b>	GC_LC area%_DefaultMethod.pmx		
<b>Manually modified:</b>	Manual Integration		



Signal: VWD1A,Wavelength=214 nm

RT [min]	Type	Width [min]	Area	Height	Area%	Name
8.393	MM m	0.10	6.68	1.07	0.02	
9.169	VB	0.25	18.31	2.73	0.05	
9.582	MM m	0.09	11.50	2.04	0.03	
9.649	MM m	0.11	24.76	3.44	0.07	
9.840	MM m	0.18	32.59	2.48	0.09	
10.395	BM m	0.15	61.48	5.56	0.16	
11.505	MM m	0.26	172.93	11.09	0.46	
11.655	MM m	0.21	36895.56	2925.51	98.80	
12.020	MM m	0.14	72.49	7.14	0.19	
12.553	BV	0.39	18.59	1.96	0.05	
12.934	VB	0.35	27.57	3.87	0.07	
	Sum		37342.45			

## MS Spectrum

 Positive  
 Intensity


Dissolution method	:15%ACN+85%H2O	Interface	:ESI	Prerod Bias	:+4.5kv
Date Acquired	:2023/6/09 10:05:52	Nebulizing Gas Flow	:1.50L/min	Detector	:-0.2kv
Injection Volume	:0.2ul	CDL Temp	:250C	T.Flow	:0.2ml/min
Block Temp	:200	CDL Volt	:0v	B.conc	:50%H2O/50%MEOH

Order ID	: MTF30200
Name	: Kisspeptin-10 Peptide
Sequence	: YNWN SFGLRY-NH2
Lot.No	: MTF30200-0605
Theoretical	: 1318.43
Observed	: 1317.86