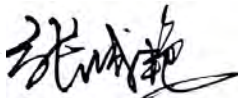

CERTIFICATE OF ANALYSIS

Product Name	Lactocin 705 α peptide, Cat.#: 309482
Lot No.	MTFA30408-2-0824
Sequence	GMSGYIQGIPDFLKGYLHGISAANKHKKGRLGY
Dissolution condition	100%H ₂ O
Length	33AA
Modification	N/A
Molecular Weight (MW)	3578.14
Storage	-20°C

Test Items	Specifications	Results
MW by MS	3578.00	Conforms
Purity by HPLC	>95%	97.196%
Peptide Content	N/A	N/A
Moisture content	N/A	N/A
Acetic acid content	N/A	N/A
Appearance	White to off-white lyophilized powder	Conforms
Quantity	20mg	5.0mg*4

NovoPro Bioscience Inc. (hereafter NovoPro) warrants material of said quality at the time of sale. It is the sole responsibility of the customers to determine the adequacy of all materials for any intended or specific purpose or use. NovoPro's sole obligation is to replace the material up to the extent of the purchase price. This warranty applies only to products in original packaging and does not apply to a product which has been tampered with or altered in any way in or which has been misused or damaged by accident or negligence. All claims must be received writing (by fax or email) within 30 days from date when product arrive at the destination city and failure to do so shall constitute a waiver by customers for any and all such claims.

Certified by:



Quality Assurance Department

Sep/28/2023

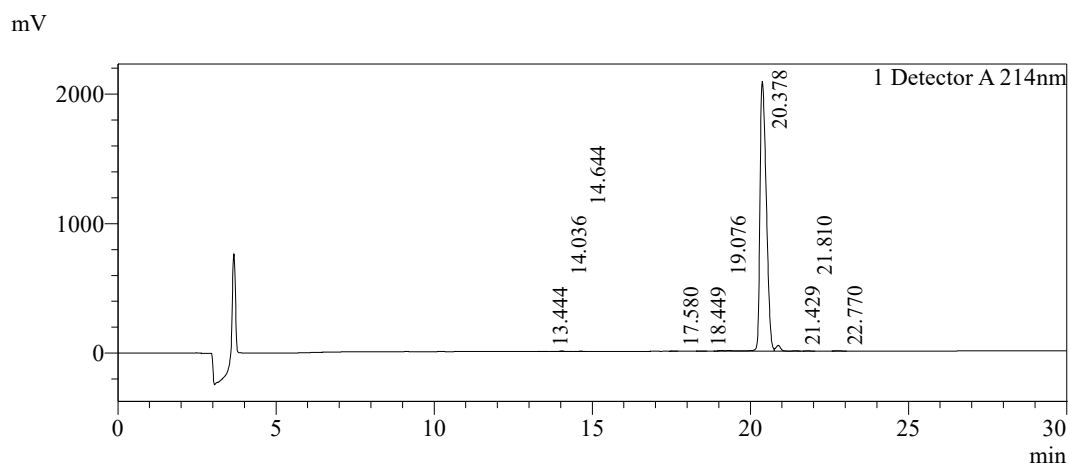


Sample Information

Order ID :MTFA30408-2
 Name :Lactocin 705 alpha chain
 Sequence :GMSGYIQGIPDFLKGYLHGISAANKHKKGRLGY
 Lot. No :MTFA30408-2-0824
 Pump A :0.1%Trifluoroacetic in 100% water
 Pump B :0.1%Trifluoroacetic in 100% acetonitrile
 Total Flow :1ml/min
 Wavelength :214nm
 Analytical column type :Shim-pack GIST C18(4.6*250mm*5um)
 Dissolution method :100%H2O
 Inj. Volume : 40ul

Time	Module	Action	Value
0.01	Pumps	B.Conc	20
30.00	Pumps	B.Conc	50
33.00	Pumps	B.Conc	100
38.00	Pumps	B.Conc	100
40.00	Pumps	B.Conc	20
50.00	Controller	Stop	

Chromatogram

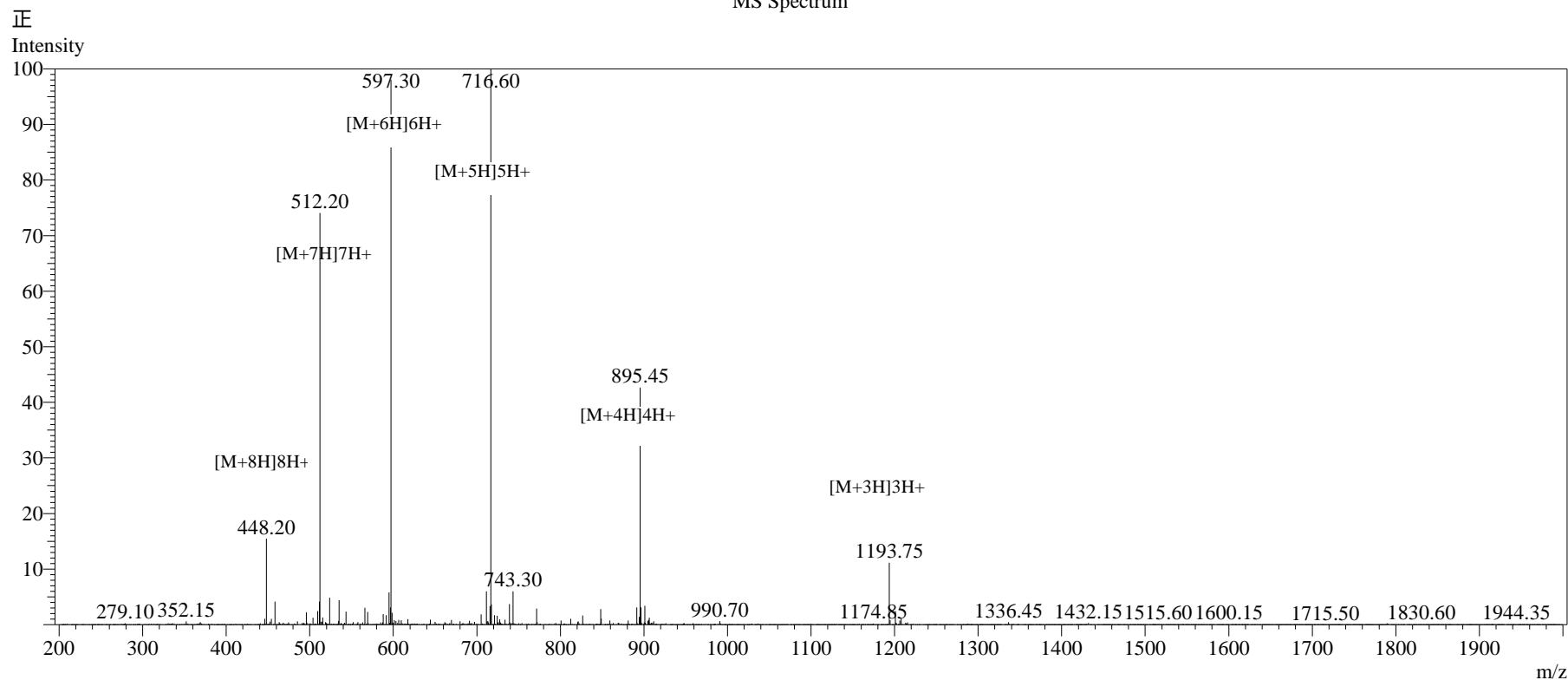


Peak Table

Detector A 214nm

Peak#	Ret. Time	Area	Height	Area%
1	13.444	8050	1073	0.027
2	14.036	44028	4160	0.149
3	14.644	9299	1129	0.031
4	17.580	3225	454	0.011
5	18.449	10161	1180	0.034
6	19.076	255794	6508	0.863
7	20.378	28796252	2085411	97.196
8	21.429	476186	1682	1.607
9	21.810	10389	1196	0.035
10	22.770	13594	1130	0.046
Total		29626978	2103922	100.000

MS Spectrum



Sample Information

Dissolution method	:15% ACN+85% H ₂ O	Interface	:ESI	Prerod Bias	:+4.5kv
Date Acquired	:2023/09/12 11:38:49	Nebulizing Gas Flow	:1.50L/min	Detector	:-0.2kv
Injection Volume	:0.2ul	CDL Temp	:250°C	T.Flow	:0.2ml/min
Block Temp	:200	CDL Volt	:0v	B.conc	:50% H ₂ O/50% MEOH

Order ID	:MTFA30408-2
Name	:Lactocin 705 alpha chain
Sequence	:GMSGYIQGIPDFLKGYLHGISAANKHKKGRLGY
Lot.No	:MTFA30408-2-0824
Theoretical	:3578.14
Observed	:3578.00