

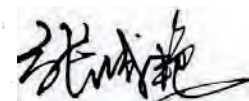
**CERTIFICATE OF ANALYSIS**

<b>Product Name</b>	Neuropeptide-gamma (Cat.#300392)
<b>Lot No.</b>	MTFA30650-1030
<b>Sequence</b>	DAGHGQISHKRHKTDSEFVGLM
<b>Dissolution condition</b>	100%H <sub>2</sub> O
<b>Length</b>	21AA
<b>Modification</b>	N/A
<b>Molecular Weight (MW)</b>	2321.59
<b>Storage</b>	-20°C

<b>Test Items</b>	<b>Specifications</b>	<b>Results</b>
<b>MW by MS</b>	2321.60	Conforms
<b>Purity by HPLC</b>	>95%	96.677%
<b>Peptide Content</b>	N/A	N/A
<b>Moisture content</b>	N/A	N/A
<b>Acetic acid content</b>	N/A	N/A
<b>Appearance</b>	White to off-white lyophilized powder	Conforms
<b>Quantity</b>	10mg	5.0mg*2

NovoPro Bioscience Inc. (hereafter NovoPro) warrants material of said quality at the time of sale. It is the sole responsibility of the customers to determine the adequacy of all materials for any intended or specific purpose or use. NovoPro's sole obligation is to replace the material up to the extent of the purchase price. This warranty applies only to products in original packaging and does not apply to a product which has been tampered with or altered in any way in or which has been misused or damaged by accident or negligence. All claims must be received writing (by fax or email) within 30 days from date when product arrive at the destination city and failure to do so shall constitute a waiver by customers for any and all such claims.

Certified by:



Quality Assurance Department

Nov/14/2023

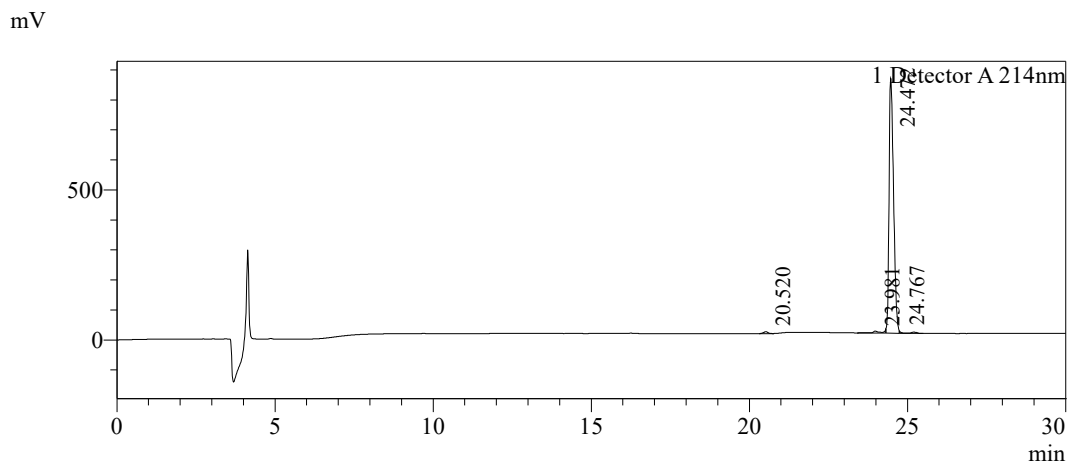


Sample Information

Order ID :MTFA30650  
 Name :Neuropeptide-gamma  
 Sequence :DAGHGQISHKRHKTDSEFVGLM  
 Lot. No :MTFA30650-1030  
 Pump A :0.1%Trifluoroacetic in 100% water  
 Pump B :0.1%Trifluoroacetic in 100% acetonitrile  
 Total Flow :1ml/min  
 Wavelength :214nm  
 Analytical column type :Phenomenex Luna® 5 µm C18(2) (4.6\*250mm\*5 µm)  
 Dissolution method :100%H2O  
 Inj. Volume : 30ul

Time	Module	Action	Value
0.01	Pumps	B.Conc	10
30.00	Pumps	B.Conc	40
33.00	Pumps	B.Conc	100
38.00	Pumps	B.Conc	100
40.00	Pumps	B.Conc	10
50.00	Controller	Stop	

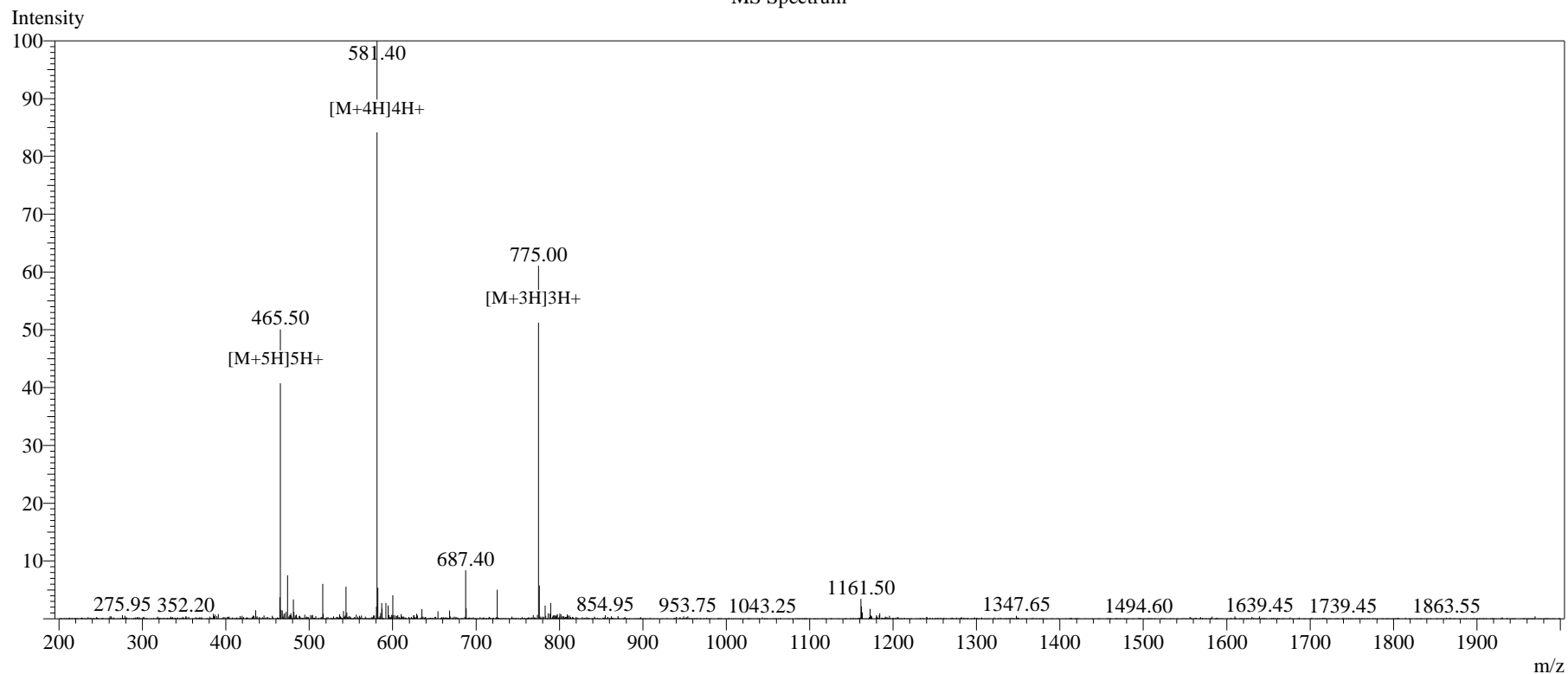
Chromatogram



Peak Table

Detector A 214nm				
Peak#	Ret. Time	Area	Height	Area%
1	20.520	59664	6072	0.681
2	23.981	146007	6701	1.667
3	24.472	8468003	849218	96.677
4	24.767	85382	5855	0.975
Total		8759057	867846	100.000

### MS Spectrum



### Sample Information

Dissolution method	:15% ACN+85% H <sub>2</sub> O	Interface	:ESI	Prerod Bias	:+4.5kv
Date Acquired	:2023/11/10 11:08:57	Nebulizing Gas Flow	:1.50L/min	Detector	:-0.2kv
Injection Volume	:0.2ul	CDL Temp	:250°C	T.Flow	:0.2ml/min
Block Temp	:200	CDL Volt	:0v	B.conc	:50% H <sub>2</sub> O/50% MEOH

Order ID	:MTFA30650
Name	:Neuropeptide-gamma
Sequence	:DAGHGQISHKRHKTDTSFVGLM
Lot.No	:MTFA30650-1030
Theoretical	:2321.59
Observed	:2321.60