

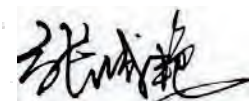
CERTIFICATE OF ANALYSIS

Product Name	Phoenixin-14 amide (Human) peptide Cat.#: 318955 (TFA removed)
Lot No.	MTFA30655-1101
Sequence	DVQPPGLKVWSDPF-NH2
Dissolution condition	100%H2O
Length	14AA
Modification	N/A
Molecular Weight (MW)	1583.78
Storage	-20°C

Test Items	Specifications	Results
MW by MS	1583.70	Conforms
Purity by HPLC	>95%	98.317%
Peptide Content	N/A	N/A
Moisture content	N/A	N/A
Acetic acid content	N/A	N/A
Appearance	White to off-white lyophilized powder	Conforms
Quantity	150mg	5.0mg*30

NovoPro Bioscience Inc. (hereafter NovoPro) warrants material of said quality at the time of sale. It is the sole responsibility of the customers to determine the adequacy of all materials for any intended or specific purpose or use. NovoPro's sole obligation is to replace the material up to the extent of the purchase price. This warranty applies only to products in original packaging and does not apply to a product which has been tampered with or altered in any way in or which has been misused or damaged by accident or negligence. All claims must be received writing (by fax or email) within 30 days from date when product arrive at the destination city and failure to do so shall constitute a waiver by customers for any and all such claims.

Certified by:



Quality Assurance Department

Nov/14/2023



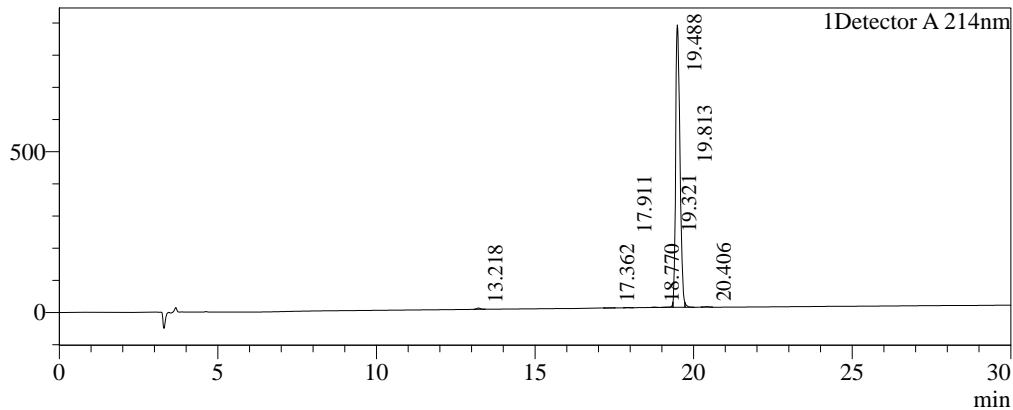
Sample Information

Order ID :MTFA30655
 Name :Phoenixin-14 amide (Human) peptide
 Sequence :DVQPPGLKVWSDPF-NH2
 Lot. No :MTFA30655-1101
 Pump A :0.1% Trifluoroacetic in 100% water
 Pump B :0.1% Trifluoroacetic in 100% acetonitrile
 Total Flow :1ml/min
 Wavelength :214nm
 Analytical column type :Inertsil ODS-SP C18 (4.6*250mm*5um)
 Dissolution method :100% H2O
 Inj. Volume : 10ul

Time	Module	Action	Value
0.01	Pumps	B.Conc	15
30.00	Pumps	B.Conc	45
33.00	Pumps	B.Conc	100
38.00	Pumps	B.Conc	100
40.00	Pumps	B.Conc	15
50.00	Controller	Stop	

Chromatogram

mV

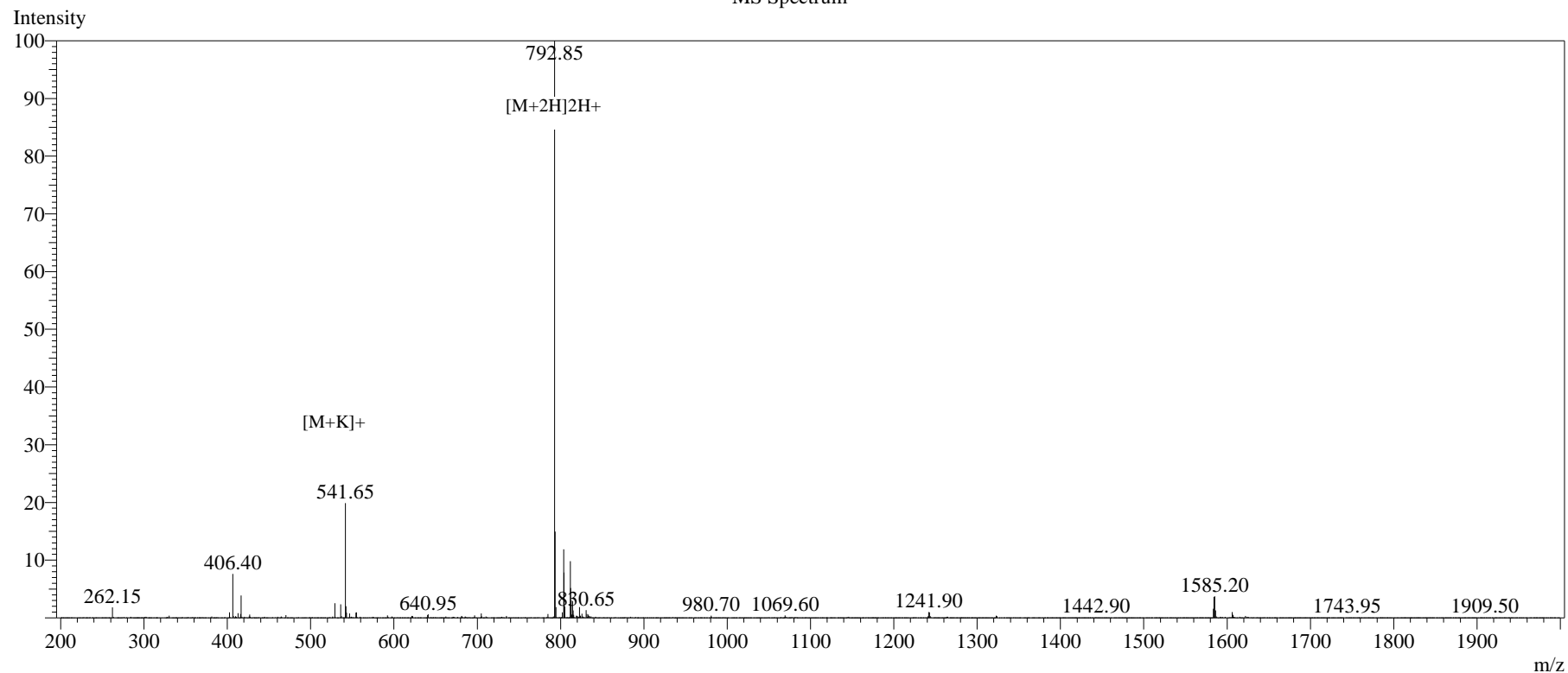


Peak Table

Detector A 214nm

Peak#	Ret. Time	Area	Height	Area%
1	13.218	31074	3800	0.371
2	17.362	5167	591	0.062
3	17.911	6096	665	0.073
4	18.770	4314	668	0.051
5	19.321	37156	4286	0.443
6	19.488	8244974	877110	98.317
7	19.813	43376	3321	0.517
8	20.406	13997	1529	0.167
Total		8386155	891970	100.000

MS Spectrum



Sample Information

Dissolution method	:15% ACN+85% H ₂ O	Interface	:ESI	Prerod Bias	:+4.5kv
Date Acquired	:2023/11/10 15:17:55	Nebulizing Gas Flow	:1.50L/min	Detector	:-0.2kv
Injection Volume	:0.2ul	CDL Temp	:250°C	T.Flow	:0.2ml/min
Block Temp	:200	CDL Volt	:0v	B.conc	:50% H ₂ O/50% MEOH

Order ID	:MTFA30655
Name	:Phoenixin-14 amide (Human) peptide
Sequence	:DVQPPGLK ⁺ VWSDPF-NH ₂
Lot.No	:MTFA30655-1101
Theoretical	:1583.78
Observed	:1583.70