

## CERTIFICATE OF ANALYSIS

<b>Product Name</b>	Phytosulfokine alpha peptide (Cat.#310384)
<b>Lot No.</b>	MTFA30041-0324
<b>Sequence</b>	H-Tyr(SO <sub>3</sub> H)-Ile-Tyr(SO <sub>3</sub> H)-Thr-Gln-OH
<b>Dissolution condition</b>	100%H <sub>2</sub> O
<b>Length</b>	5AA
<b>Modification</b>	N/A
<b>Molecular Weight (MW)</b>	846.77
<b>Storage</b>	-20°C

Test Items	Specifications	Results
MW by MS	846.75	Conforms
Purity by HPLC	>95%	95.922%
Peptide Content	N/A	N/A
Moisture content	N/A	N/A
Acetic acid content	N/A	N/A
Appearance	White to off-white lyophilized powder	Conforms
Quantity	100mg	5.0mg*20

NovoPro Bioscience Inc. (hereafter NovoPro) warrants material of said quality at the time of sale. It is the sole responsibility of the customers to determine the adequacy of all materials for any intended or specific purpose or use. NovoPro's sole obligation is to replace the material up to the extent of the purchase price. This warranty applies only to products in original packaging and does not apply to a product which has been tampered with or altered in any way in or which has been misused or damaged by accident or negligence. All claims must be received writing (by fax or email) within 30 days from date when product arrive at the destination city and failure to do so shall constitute a waiver by customers for any and all such claims.

Certified by:



Quality Assurance Department

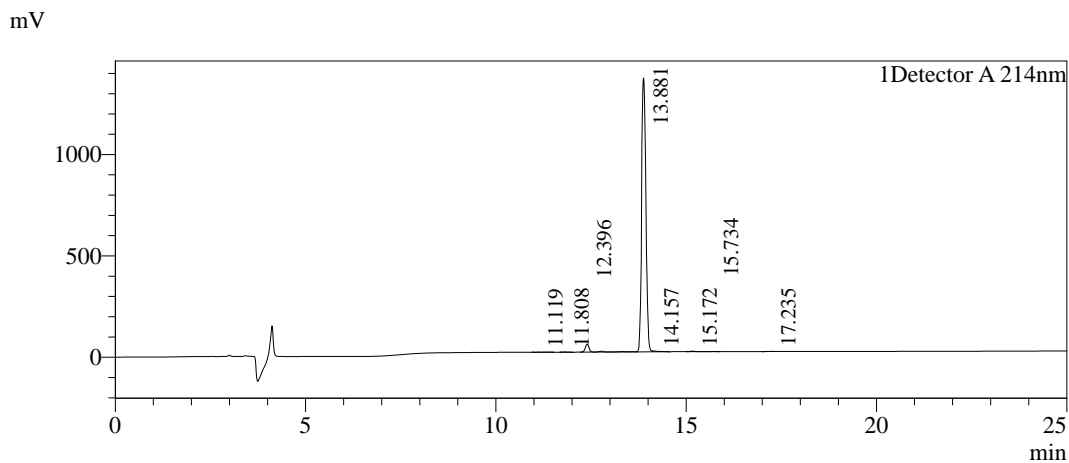
Mar/29/2023



### Sample Information

Order ID :MTFA30041  
 Name :Phytosulfokine alpha peptide  
 Sequence :H-Tyr(SO<sub>3</sub>H)-Ile-Tyr(SO<sub>3</sub>H)-Thr-Gln-OH  
 Lot. No :MTFA30041-0324  
 Pump A :0.1% Trifluoroacetic in 100% water  
 Pump B :0.1% Trifluoroacetic in 100% acetonitrile  
 Total Flow :1ml/min  
 Wavelength :214nm  
 Analytical column type :YMC-Triart C18(4.6\*250mm\*5um)  
 Dissolution method :100% H<sub>2</sub>O  
 Inj. Volume : 25ul  
 Time Module Action Value  
 0.01 Pumps B.Conc 5  
 25.00 Pumps B.Conc 30  
 33.00 Pumps B.Conc 100  
 38.00 Pumps B.Conc 100  
 40.00 Pumps B.Conc 5  
 50.00 Controller Stop

### Chromatogram

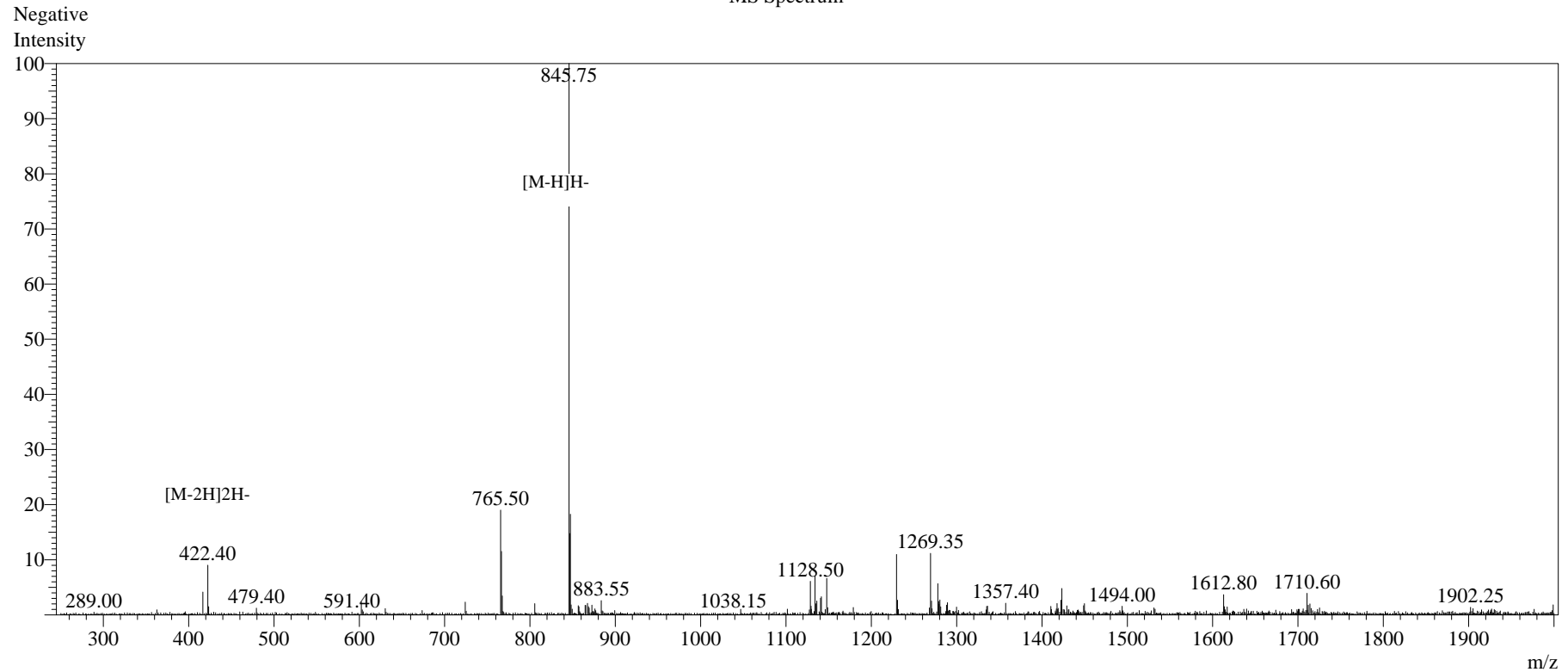


### Peak Table

Detector A 214nm

Peak#	Ret. Time	Area	Height	Area%
1	11.119	10478	658	0.095
2	11.808	9899	1311	0.090
3	12.396	347711	39739	3.160
4	13.881	10554980	1351270	95.922
5	14.157	41350	3938	0.376
6	15.172	20177	2818	0.183
7	15.734	10938	972	0.099
8	17.235	8157	963	0.074
Total		11003691	1401669	100.000

## MS Spectrum



## Sample Information

Dissolution method	:15% ACN+85% H <sub>2</sub> O	Interface	:ESI	Prerod Bias	:+4.5kv
Date Acquired	:2023/03/28 16:54:17	Nebulizing Gas Flow	:1.50L/min	Detector	:-0.2kv
Injection Volume	:0.2ul	CDL Temp	:250C	T.Flow	:0.2ml/min
Block Temp	:200	CDL Volt	:0v	B.conc	:50% H <sub>2</sub> O/50% MEOH

Order ID	:MFTA30041
Name	:Phytosulfokine alpha peptide
Sequence	:H-Tyr(SO <sub>3</sub> H)-Ile-Tyr(SO <sub>3</sub> H)-Thr-Gln-OH
Lot.No	:MFTA30041-0324
Theoretical	:846.77
Observed	:846.75