

## CERTIFICATE OF ANALYSIS

Product Name	R18 peptide, Cat.#: 319035
Lot No.	MTFA32815
Sequence	PHCVPRDLSWLDLEANMCLP
Dissolution condition	100%H <sub>2</sub> O
Length	20AA
Modification	N/A
Molecular Weight (MW)	2309.67
Storage	-20°C

Test Items	Specifications	Results
MW by MS	2309.85	Conforms
Purity by HPLC	>95%	95.034%
Peptide content	N/A	N/A
Moisture content	N/A	N/A
Acetic acid content	N/A	N/A
Appearance	White to off-white lyophilized powder	Conforms
Quantity	10mg	5.0mg*2

NovoPro Bioscience Inc. (hereafter NovoPro) warrants material of said quality at the time of sale. It is the sole responsibility of the customers to determine the adequacy of all materials for any intended or specific purpose or use. NovoPro's sole obligation is to replace the material up to the extent of the purchase price. This warranty applies only to products in original packaging and does not apply to a product which has been tampered with or altered in any way in or which has been misused or damaged by accident or negligence. All claims must be received writing (by fax or email) within 30 days from date when product arrive at the destination city and failure to do so shall constitute a waiver by customers for any and all such claims.

Certified by:



May/29/2025

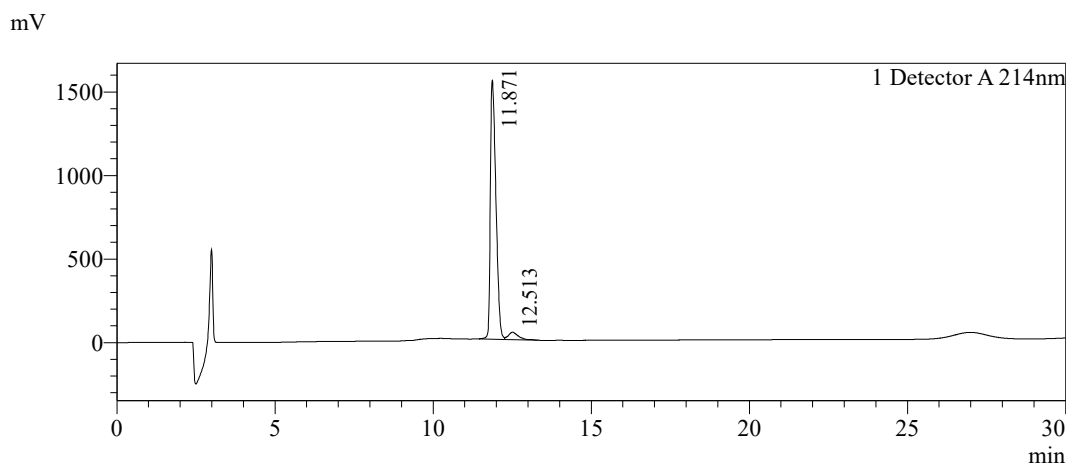
Quality Assurance Department



### Sample Information

Order ID	:MTFA32815		
Name	:R18 peptide		
Sequence	:PHCVPRDLSWLDLEANMCLP		
Lot. No	:MTFA32815-250513		
Pump A	:0.1%Trifluoroacetic in 100% water		
Pump B	:0.1%Trifluoroacetic in 100% acetonitrile		
Total Flow	:1ml/min		
Wavelength	:214nm		
Analytical column type	:Kromasil 100-5-C18 (4.6*250mm*5 µm)		
Dissolution method	:100%H <sub>2</sub> O		
Inj. Volume	: 30ul		
Time	Module	Action	Value
0.01	Pumps	B.Conc	30
30.00	Pumps	B.Conc	60
33.00	Pumps	B.Conc	100
38.00	Pumps	B.Conc	100
40.00	Pumps	B.Conc	30
50.00	Controller	Stop	

### Chromatogram

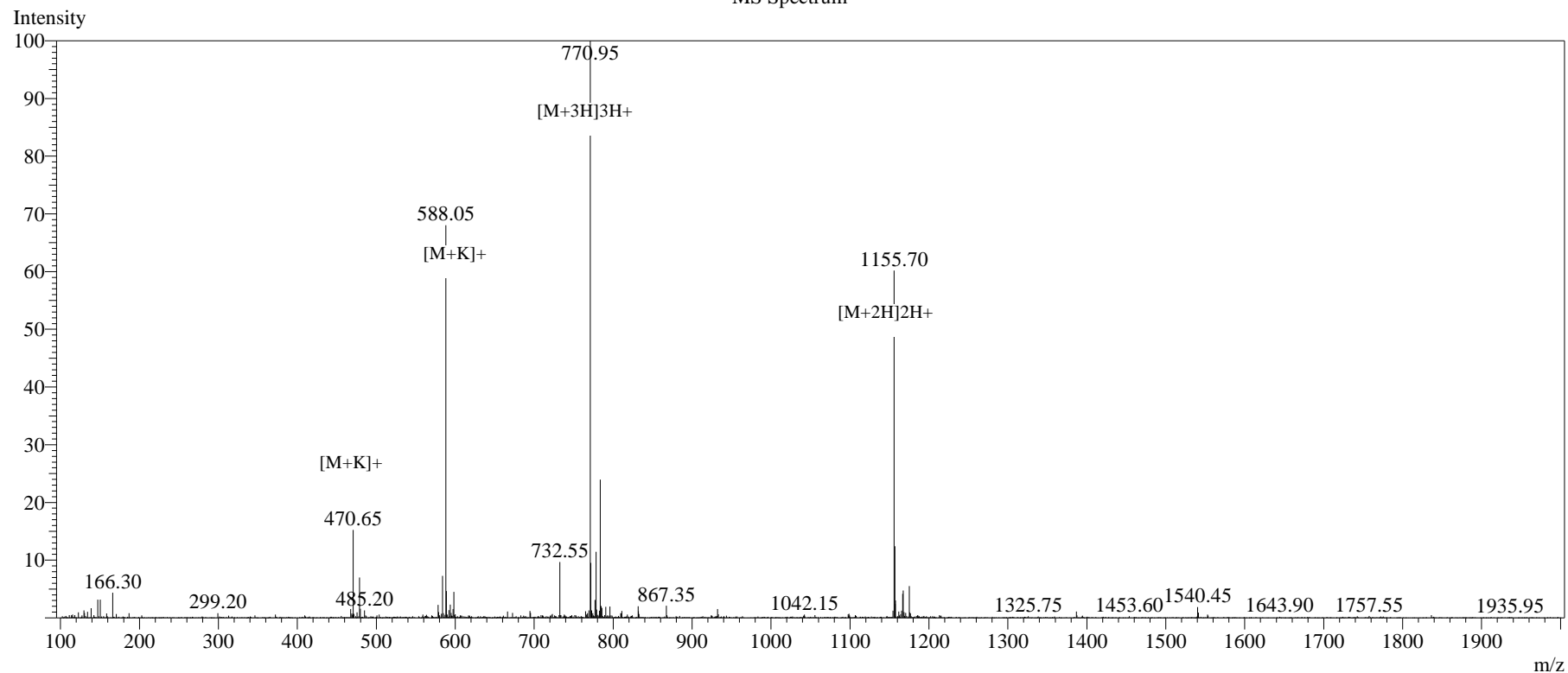


### Peak Table

Detector A 214nm

Peak#	Ret. Time	Area	Height	Area%
1	11.871	19008034	1548625	95.034
2	12.513	993233	44672	4.966
Total		20001267	1593297	100.000

# MS Spectrum



## Sample Information

Dissolution method	:15% ACN+85% H <sub>2</sub> O	Interface	:ESI	Prerod Bias	:+4.5kv
Date Acquired	:2025/05/28 09:52:54	Nebulizing Gas Flow	:1.50L/min	Detector	:-0.2kv
Injection Volume	:0.2ul	CDL Temp	:250°C	T.Flow	:0.2ml/min
Block Temp	:200	CDL Volt	:0v	B.conc	:50% H <sub>2</sub> O/50% ME OH
Order ID	:MTFA32815				
Name	:R18 peptide				
Sequence	:PHCVPRDLSWLDLEANMCLP				
Lot.No	:MTFA32815-250513				
Theoretical	:2309.67				
Observed	:2309.85				