

**CERTIFICATE OF ANALYSIS**

<b>Product Name</b>	REF1 (tomato) peptide, Cat.#: 319605 (TFA removed)
<b>Lot No.</b>	MTFA32182-1204
<b>Sequence</b>	ATDRRGRPPSRPKVGS GPPPQNN (Acetate Salt)
<b>Dissolution condition</b>	100%H <sub>2</sub> O
<b>Length</b>	23AA
<b>Modification</b>	acetate salt
<b>Molecular Weight (MW)</b>	2441.66
<b>Storage</b>	-20°C

<b>Test Items</b>	<b>Specifications</b>	<b>Results</b>
<b>MW by MS Purity</b>	2442.25	Conforms
<b>by HPLC Peptide content</b>	>90%	98.669%
<b>Moisture content</b>	N/A	N/A
<b>Acetic acid content</b>	N/A	N/A
<b>Other content</b>	N/A	N/A
<b>Appearance</b>	White to off-white lyophilized powder	Conforms
<b>Quantity</b>	10mg	1.0mg*10

NovoPro Bioscience Inc. (hereafter NovoPro) warrants material of said quality at the time of sale. It is the sole responsibility of the customers to determine the adequacy of all materials for any intended or specific purpose or use. NovoPro's sole obligation is to replace the material up to the extent of the purchase price. This warranty applies only to products in original packaging and does not apply to a product which has been tampered with or altered in any way in or which has been misused or damaged by accident or negligence. All claims must be received writing (by fax or email) within 30 days from date when product arrive at the destination city and failure to do so shall constitute a waiver by customers for any and all such claims.

Certified by:



Quality Assurance Department

Dec/06/2024

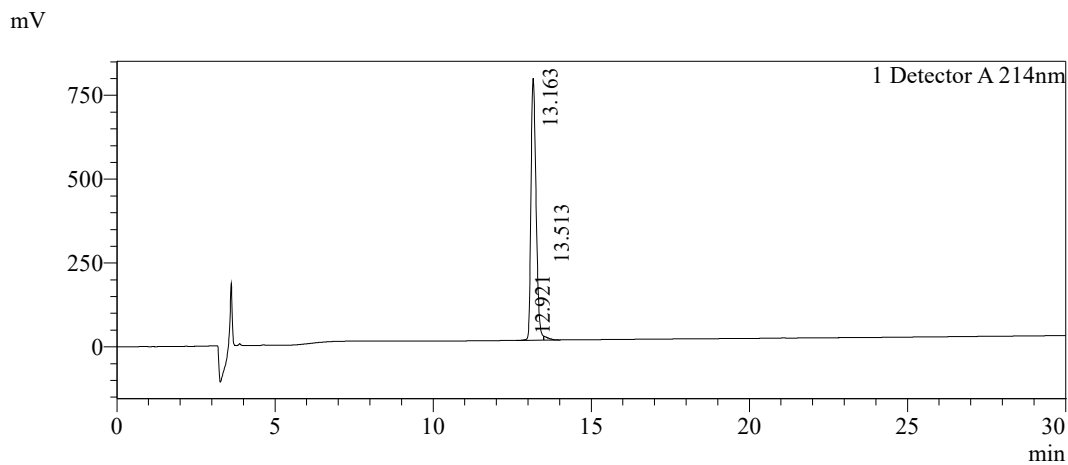


### Sample Information

Order ID :MTFA32182  
 Name :REF1 (tomato) peptide  
 Sequence :ATDRRGRPPSRPKVGS GPPPQNN (Acetate Salt)  
 Lot. No :MTFA32182-1204  
 Pump A :0.1%Trifluoroacetic in 100% water  
 Pump B :0.1%Trifluoroacetic in 100% acetonitrile  
 Total Flow :1ml/min  
 Wavelength :214nm  
 Analytical column type :Kromasil 100-5-C18 (4.6\*250mm\*5 µm)  
 Dissolution method :100%H2O  
 Inj. Volume : 25ul

Time	Module	Action	Value
0.01	Pumps	B.Conc	5
30.00	Pumps	B.Conc	35
33.00	Pumps	B.Conc	100
38.00	Pumps	B.Conc	100
40.00	Pumps	B.Conc	5
50.00	Controller	Stop	

### Chromatogram

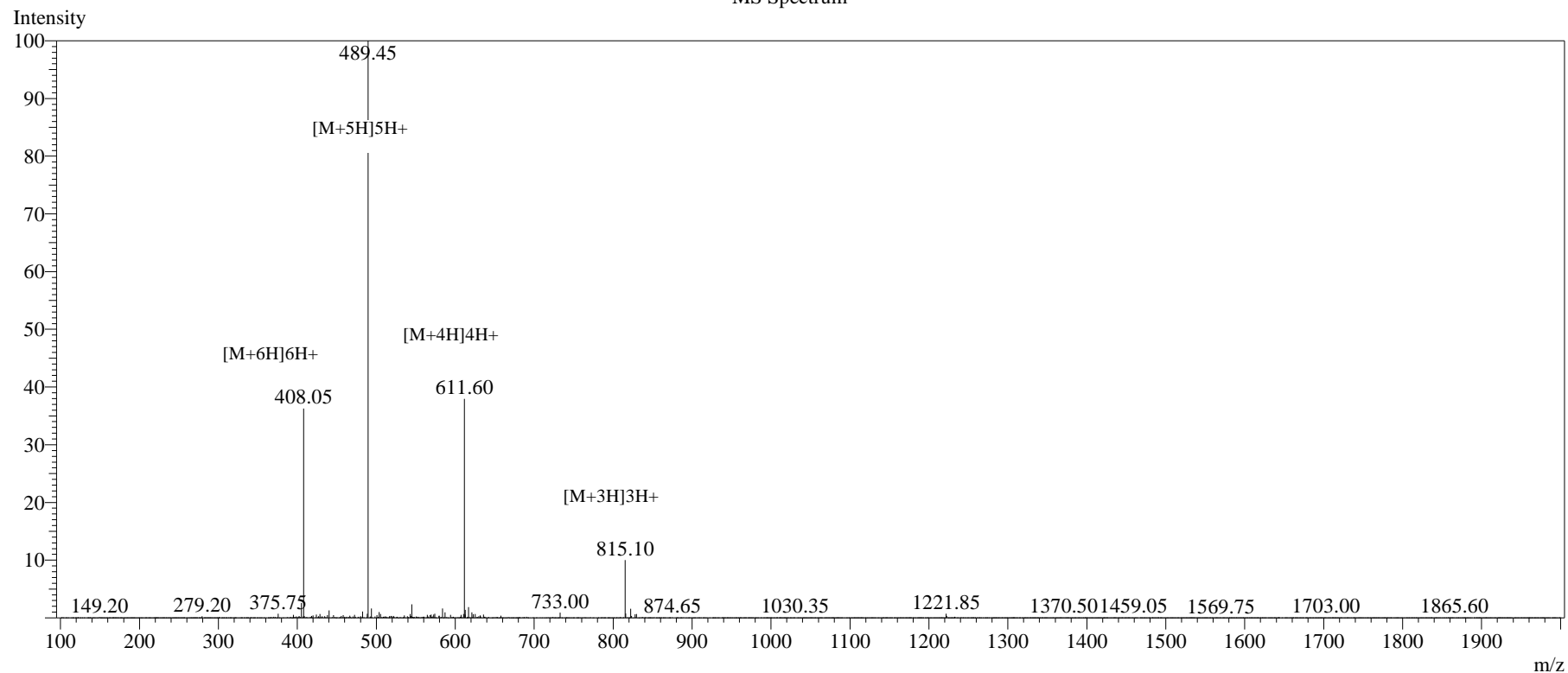


### Peak Table

Detector A 214nm

Peak#	Ret. Time	Area	Height	Area%
1	12.921	8979	1786	0.101
2	13.163	8745289	780787	98.669
3	13.513	108992	11498	1.230
Total		8863260	794071	100.000

### MS Spectrum



### Sample Information

Dissolution method	:15% ACN+85% H <sub>2</sub> O	Interface	:ESI	Prerod Bias	:+4.5kv
Date Acquired	:2024/12/05 11:39:42	Nebulizing Gas Flow	:1.50L/min	Detector	:-0.2kv
Injection Volume	:0.2ul	CDL Temp	:250°C	T.Flow	:0.2ml/min
Block Temp	:200	CDL Volt	:0v	B.conc	:50% H <sub>2</sub> O/50% MEOH

Order ID	:MTFA32182
Name	:REF1 (tomato) peptide
Sequence	:ATDRRGRPPSRPKVGSGLPPQNN (Acetate Salt)
Lot.No	:MTFA32182-1204
Theoretical	:2441.66
Observed	:2442.25