


**CERTIFICATE OF ANALYSIS**

<b>Product Name</b>	RVG29 peptide, Cat.#: 319149
<b>Lot No.</b>	MTFA30295-0719
<b>Sequence</b>	YTIWMPENPRPGTPCDIFTNSRGKRASNG
<b>Dissolution condition</b>	15%ACN+85%H2O
<b>Length</b>	29AA
<b>Modification</b>	N/A
<b>Molecular Weight (MW)</b>	3266.63
<b>Storage</b>	-20°C

<b>Test Items</b>	<b>Specifications</b>	<b>Results</b>
<b>MW by MS</b>	3266.60	Conforms
<b>Purity by HPLC</b>	>95%	96.917%
<b>Peptide Content</b>	N/A	N/A
<b>Moisture content</b>	N/A	N/A
<b>Acetic acid content</b>	N/A	N/A
<b>Appearance</b>	White to off-white lyophilized powder	Conforms
<b>Quantity</b>	10mg	5.0mg*2

NovoPro Bioscience Inc. (hereafter NovoPro) warrants material of said quality at the time of sale. It is the sole responsibility of the customers to determine the adequacy of all materials for any intended or specific purpose or use. NovoPro's sole obligation is to replace the material up to the extent of the purchase price. This warranty applies only to products in original packaging and does not apply to a product which has been tampered with or altered in any way in or which has been misused or damaged by accident or negligence. All claims must be received writing (by fax or email) within 30 days from date when product arrive at the destination city and failure to do so shall constitute a waiver by customers for any and all such claims.

Certified by:



Quality Assurance Department

Aug/03/2023



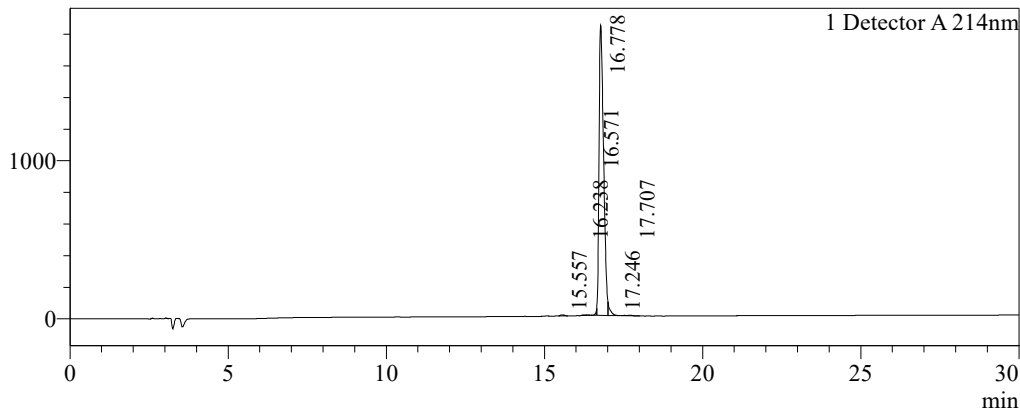
### Sample Information

Order ID :MTFA30295  
 Name :RVG29 peptide  
 Sequence :YTIWMPENPRPGTGPCDIFTNSRGKRASNG  
 Lot. No :MTFA30295-0719  
 Pump A :0.1%Trifluoroacetic in 100% water  
 Pump B :0.1%Trifluoroacetic in 100% acetonitrile  
 Total Flow :1ml/min  
 Wavelength :214nm  
 Analytical column type :Shim-pack GIST C18(4.6\*250mm\*5um)  
 Dissolution method :15%ACN+85%H2O  
 Inj. Volume : 30ul

Time	Module	Action	Value
0.01	Pumps	B.Conc	20
30.00	Pumps	B.Conc	50
33.00	Pumps	B.Conc	100
38.00	Pumps	B.Conc	100
40.00	Pumps	B.Conc	20
50.00	Controller	Stop	

### Chromatogram

mV

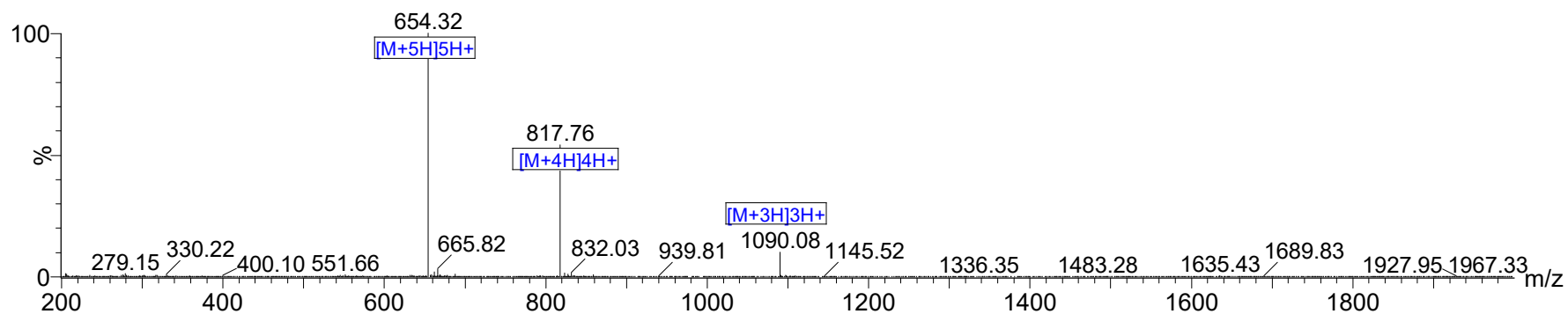


### Peak Table

Detector A 214nm

Peak#	Ret. Time	Area	Height	Area%
1	15.557	56910	6748	0.301
2	16.238	43580	4395	0.231
3	16.571	81886	2069	0.434
4	16.778	18303855	1834049	96.917
5	17.246	350413	3016	1.855
6	17.707	49527	4197	0.262
Total		18886172	1854473	100.000

## MS Spectrum

 Positive  
 Intensity


Dissolution method	:15%ACN+85%H2O	Interface	:ESI	Prerod Bias	:+4.5kv
Date Acquired	:8/2/2023 5:24:57 PM	Nebulizing Gas Flow	:1.50L/min	Detector	:-0.2kv
Injection Volume	:0.2ul	CDL Temp	:250C	T.Flow	:0.2ml/min
Block Temp	:200	CDL Volt	:0v	B.conc	:50%H2O/50%MEOH

Order ID	: MTF A30295
Name	: RVG29 peptide
Sequence	: YTIWMPENPRPGTPCDIFTNSRGKRASNG
Lot.No	: MTF A30295-0719
Theoretical	: 3266.63
Observed	: 3266.60