

CERTIFICATE OF ANALYSIS

Product Name	RecA-Like Protein (193-212) peptide (TFA removed), Cat.#: 301770
Lot No.	MTFA32290-0103
Sequence	NQIRMKIGVMWGNPETTTGG (Acetate Salt)
Dissolution condition	5%HCOOH+15%ACN+80%H ₂ O
Length	20AA
Modification	acetate salt
Molecular Weight (MW)	2190.54
Storage	-20°C

Test Items	Specifications	Results
MW by MS	2190.60	Conforms
Purity by HPLC	>95%	95.029%
Peptide content	N/A	N/A
Moisture content	N/A	N/A
Acetic acid content	N/A	N/A
Appearance	White to off-white lyophilized powder	Conforms
Quantity	10mg	5.0mg*2

NovoPro Bioscience Inc. (hereafter NovoPro) warrants material of said quality at the time of sale. It is the sole responsibility of the customers to determine the adequacy of all materials for any intended or specific purpose or use. NovoPro's sole obligation is to replace the material up to the extent of the purchase price. This warranty applies only to products in original packaging and does not apply to a product which has been tampered with or altered in any way in or which has been misused or damaged by accident or negligence. All claims must be received writing (by fax or email) within 30 days from date when product arrive at the destination city and failure to do so shall constitute a waiver by customers for any and all such claims.

Certified by:



Quality Assurance Department

Feb/07/2025

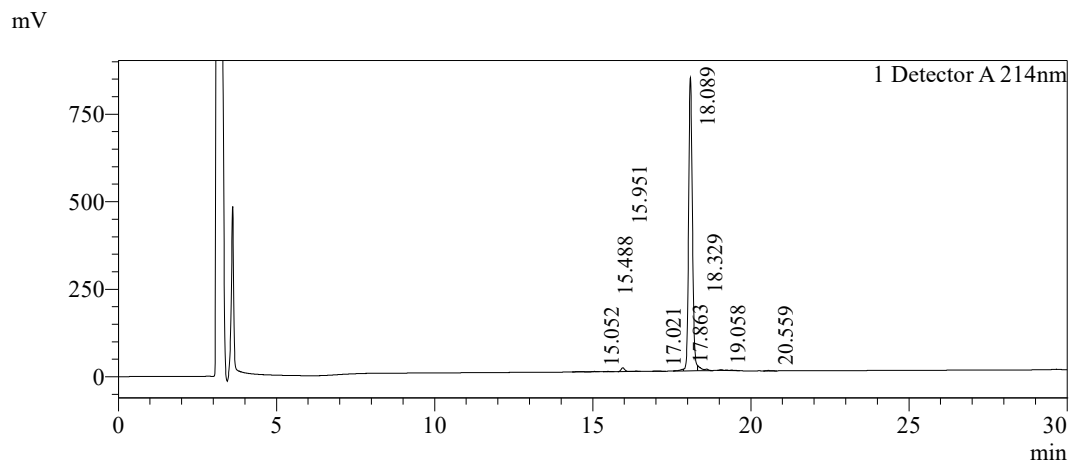


Sample Information

Order ID	:MTFA32290
Name	:RecA-Like Pro (193-212)
Sequence	:NQIRMKIGVMWGNPETTTGG (Acetate Salt)
Lot. No	:MTFA32290-0103
Pump A	:0.1%Trifluoroacetic in 100% water
Pump B	:0.1%Trifluoroacetic in 100% acetonitrile
Total Flow	:1ml/min
Wavelength	:214nm
Analytical column type	:Kromasil 100-5-C18 (4.6*250mm*5 µm)
Dissolution method	:5%HCOOH+15%ACN+80%H2O
Inj. Volume	: 25ul

Time	Module	Action	Value
0.01	Pumps	B.Conc	15
30.00	Pumps	B.Conc	45
33.00	Pumps	B.Conc	100
38.00	Pumps	B.Conc	100
40.00	Pumps	B.Conc	15
50.00	Controller	Stop	

Chromatogram

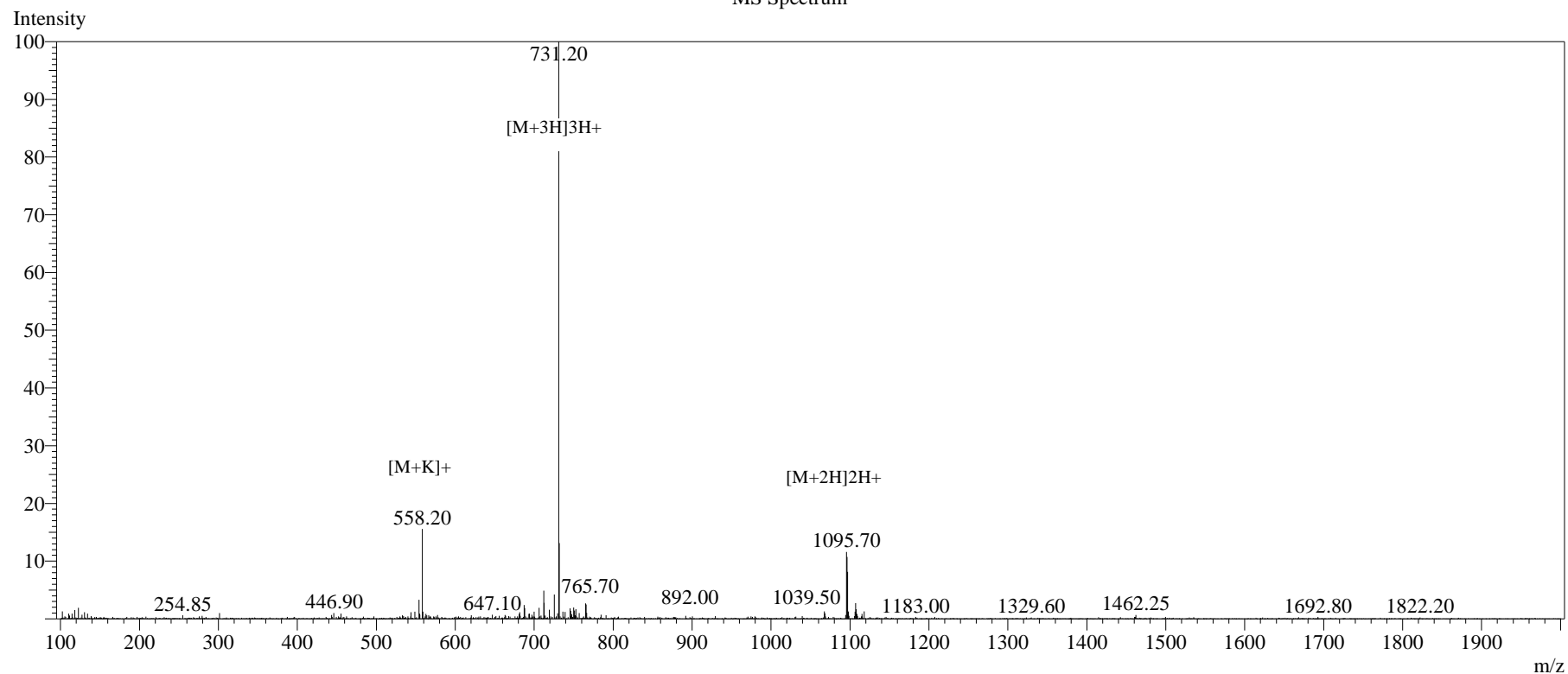


Peak Table

Detector A 214nm

Peak#	Ret. Time	Area	Height	Area%
1	15.052	26076	1043	0.358
2	15.488	5682	713	0.078
3	15.951	96799	10989	1.330
4	17.021	11721	1094	0.161
5	17.863	40017	4937	0.550
6	18.089	6916709	837592	95.029
7	18.329	128231	14287	1.762
8	19.058	43841	2318	0.602
9	20.559	9462	1063	0.130
Total		7278538	874035	100.000

MS Spectrum



Sample Information

Dissolution method	:5% HCOOH+15% ACN+80% H ₂ O	Interface	:ESI	Prerod Bias	:+4.5kv
Date Acquired	:2025/01/18 15:32:39	Nebulizing Gas Flow	:1.50L/min	Detector	:-0.2kv
Injection Volume	:0.2ul	CDL Temp	:250°C	T.Flow	:0.2ml/min
Block Temp	:200	CDL Volt	:0v	B.conc	:50% H ₂ O/50% ME OH

Order ID	:MTFA32290
Name	:RecA-Like Pro (193-212)
Sequence	:NQIRMKIGVMWGNPETTTGG(Acetate Salt)
Lot.No	:MTFA32290-0103
Theoretical	:2190.54
Observed	:2190.60