


CERTIFICATE OF ANALYSIS

Product Name	Retatrutide / LY3437943 (Cat.# 319206, >99% purity)
Lot No.	6009-0126-01
Sequence	Tyr-{Aib}-Gln-Gly-Thr-Phe-Thr-Ser-Asp-Tyr-Ser-Ile- $\{\alpha$ -Me-Leu}-Leu-Asp-Lys-{diacid-C20-gamma-Glu-(AEEA)-Lys}-Ala-Gln-{Aib}-Ala-Phe-Ile-Glu-Tyr-Leu-Leu-Glu-Gly-Gly-Pro-Ser-Ser-Gly-Ala-Pro-Pro-Pro-Ser-NH ₂ (Sodium salt)
Dissolution condition	100% H ₂ O
Length	39AA
Modification	sodium salt
Molecular Weight (MW)	4731.33
Storage	-20°C

	Specifications	Results
Appearance	White to off-white lyophilized powder	Conforms
MW by MS	4731.33±1Da	4731.25Da
Dissolution	Tested: Water PBS DMSO	Water: soluble, 100mg/ml PBS: soluble, 100mg/ml DMSO: soluble, 100mg/ml
pH value	7.0-8.0	7.2
TFA	≤0.5%	0%, undetectable
Acetate	≤5.0%	0%, undetectable
Sodium salt	≤5.0%	1.30%
Purity	≥99.0%	99.366%
Impurity	Single Impurity ≤1.0%	0.2%
	Total Impurity ≤2.0%	0.3%
Polymer	≤0.5%	0.04%
Net peptide content (NPC)	≥85.0%	98.8%
Water	≤8.0%	4.2%

Certified by:



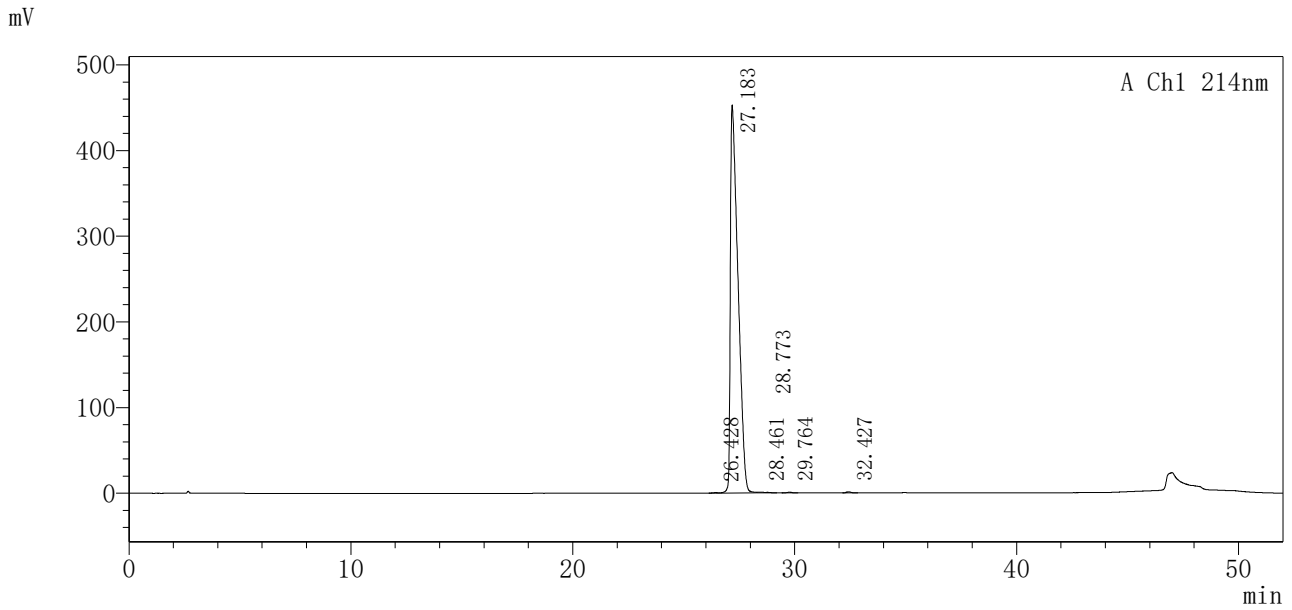
Quality Assurance Department

Mar/10/2026



Single Injection Report

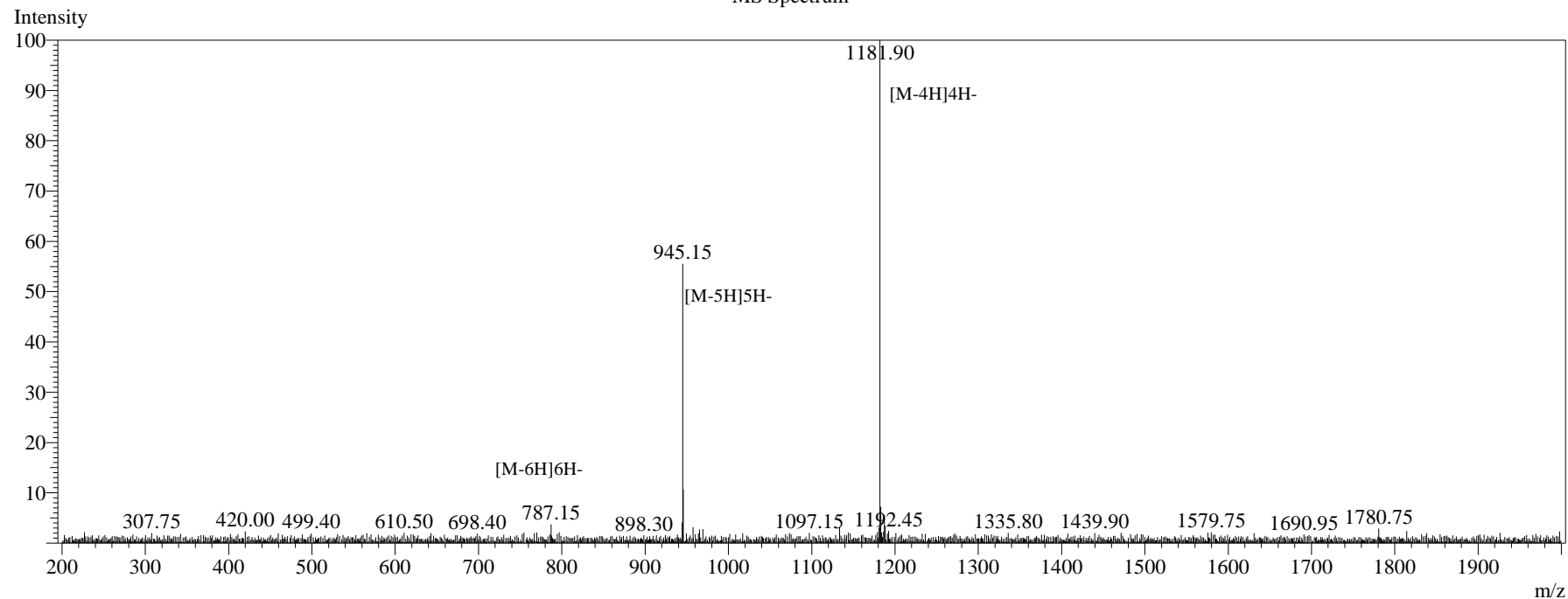
Sequence Name: : Retatrutide
 Sample name: : 6009-0126-01
 Sample ID: : 6009-0126-01
 Data file name: : 6009-0126-01.lcd
 Method File Name: : 6009-40-90-52min.lcm
 Batch file name: : 6009-0126-01.lcb
 Sample bottle number : 1-32
 Injection volume: : 10 uL
 Date of analysis: : 2026/03/10 15:49:42
 Date of processing : 2026/03/10 16:42:10



Signal: VWD1A, Wavelength=214 nm

Peak #	RT [min]	Area	Height	Area%	Plate No. (USP)	Tailing factor	Resolution(USP)
1	26.428	7830	514	0.072	54413	--	--
2	27.183	10824402	452728	99.366	24907	2.4	1.3
3	28.461	18753	1033	0.172	18525	--	1.7
4	28.773	11077	682	0.102	10249	--	0.3
5	29.764	12935	876	0.119	92992	1.0	1.3
6	32.427	18436	1359	0.169	128017	1.1	7.1
Total		10893433	457191	100.000			

MS Spectrum



Sample Information

Dissolution method	:H2O	Interface	:ESI	Prerod Bias	:+4.5kv
Date Acquired	:2026/03/10 14:54:48	Nebulizing Gas Flow	:1.5L0/min	Detector	:-0.2kv
Injection Volume	:0.2ul	CDL Temp	:250°C	T.Flow	:0.2ml/min
Block Temp	:200	CDL Volt	:0v	B.conc	:50%H2O/50%MEOH
Order ID	:6009				
Name	:Retatrutide				
Sequence	:Tyr-{ Aib }-Gln-Gly-Thr-Phe-Thr-Ser-Asp-Tyr-Ser-Ile-{ α-Me-Leu }-Leu-Asp-Lys-{ diacid-C20-gamma-Glu-(AEEA)-Lys }-Ala-Gln-{ Aib }-Ala-Phe-Ile-Glu-Tyr-Leu-Leu-Glu-Gly-Gly-Pro-Ser-Ser-Gly-Ala-Pro-Pro-Pro-Ser-NH2				
Lot.No	:6009-0126-01				
Theoretical	:4731.4				
Observed	:4731.6				

Instructions for dissolving Retatrutide (LY3437943)

The Retatrutide is soluble in 100% H₂O or 1xPBS. The suggested concentration is 5.0 mg/ml.

The steps are as below:

1. Adding 1.0 ml ultrapure water to the 2.0 ml tube of Retatrutide;
2. Wait about 1 minute at room temperature until the solution is clear, which indicates the peptide is fully dissolved;
3. Use a sterile 0.22 μ m membrane filter for a particle-free and bacteria-free Retatrutide solution.
For example, Catalog# SLGPR33RB, Millipore Millex-GP Syringe Filter Unit, 0.22 μ m, polyethersulfone, 33 mm, gamma sterilized.

The detailed application information of Retatrutide can be found at:

<https://pubmed.ncbi.nlm.nih.gov/37366315/>