

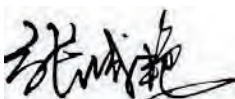
CERTIFICATE OF ANALYSIS

Product Name	W379 peptide, Cat.#: 319461
Lot No.	MTFA32080-1111
Sequence	RRRWWWVW
Dissolution condition	15%ACN+85%H ₂ O
Length	8AA
Modification	N/A
Molecular Weight (MW)	1330.55
Storage	-20°C

Test Items	Specifications	Results
MW by MS	1330.65	Conforms
Purity by HPLC	>95%	99.136%
Peptide content	N/A	N/A
Moisture content	N/A	N/A
Acetic acid content	N/A	N/A
Appearance	White to off-white lyophilized powder	Conforms
Quantity	20mg	5.0mg*4

NovoPro Bioscience Inc. (hereafter NovoPro) warrants material of said quality at the time of sale. It is the sole responsibility of the customers to determine the adequacy of all materials for any intended or specific purpose or use. NovoPro's sole obligation is to replace the material up to the extent of the purchase price. This warranty applies only to products in original packaging and does not apply to a product which has been tampered with or altered in any way in or which has been misused or damaged by accident or negligence. All claims must be received writing (by fax or email) within 30 days from date when product arrive at the destination city and failure to do so shall constitute a waiver by customers for any and all such claims.

Certified by:



Quality Assurance Department

Nov/15/2024

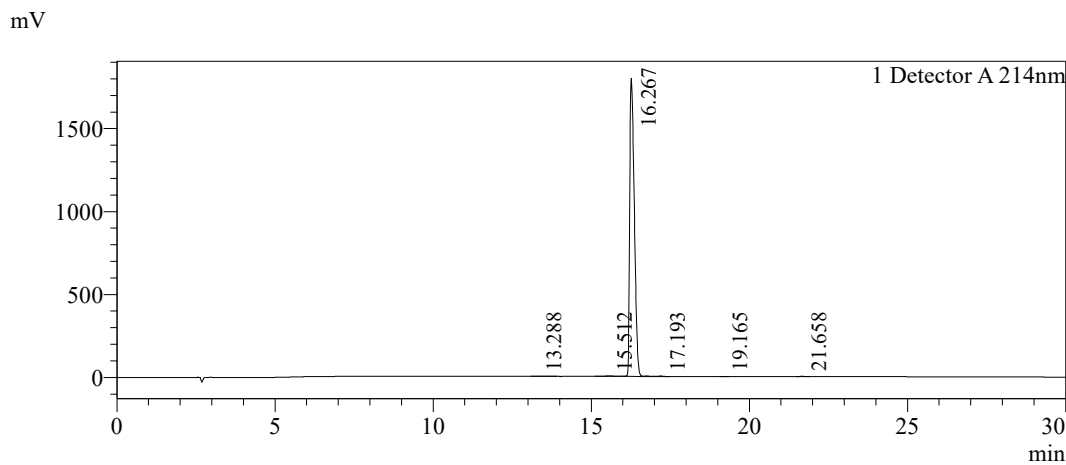


Sample Information

Order ID :MTFA32080
 Name :W379 peptide
 Sequence :RRRWWWV
 Lot. No :MTFA32080-1111
 Pump A :0.1%Trifluoroacetic in 100% water
 Pump B :0.1%Trifluoroacetic in 100% acetonitrile
 Total Flow :1ml/min
 Wavelength :214nm
 Analytical column type :Kromasil 100-5-C18 (4.6*250mm*5 µm)
 Dissolution method :15%ACN+85%H2O
 Inj. Volume : 5ul

Time	Module	Action	Value
0.01	Pumps	B.Conc	25
30.00	Pumps	B.Conc	55
33.00	Pumps	B.Conc	100
38.00	Pumps	B.Conc	100
40.00	Pumps	B.Conc	25
50.00	Controller	Stop	

Chromatogram

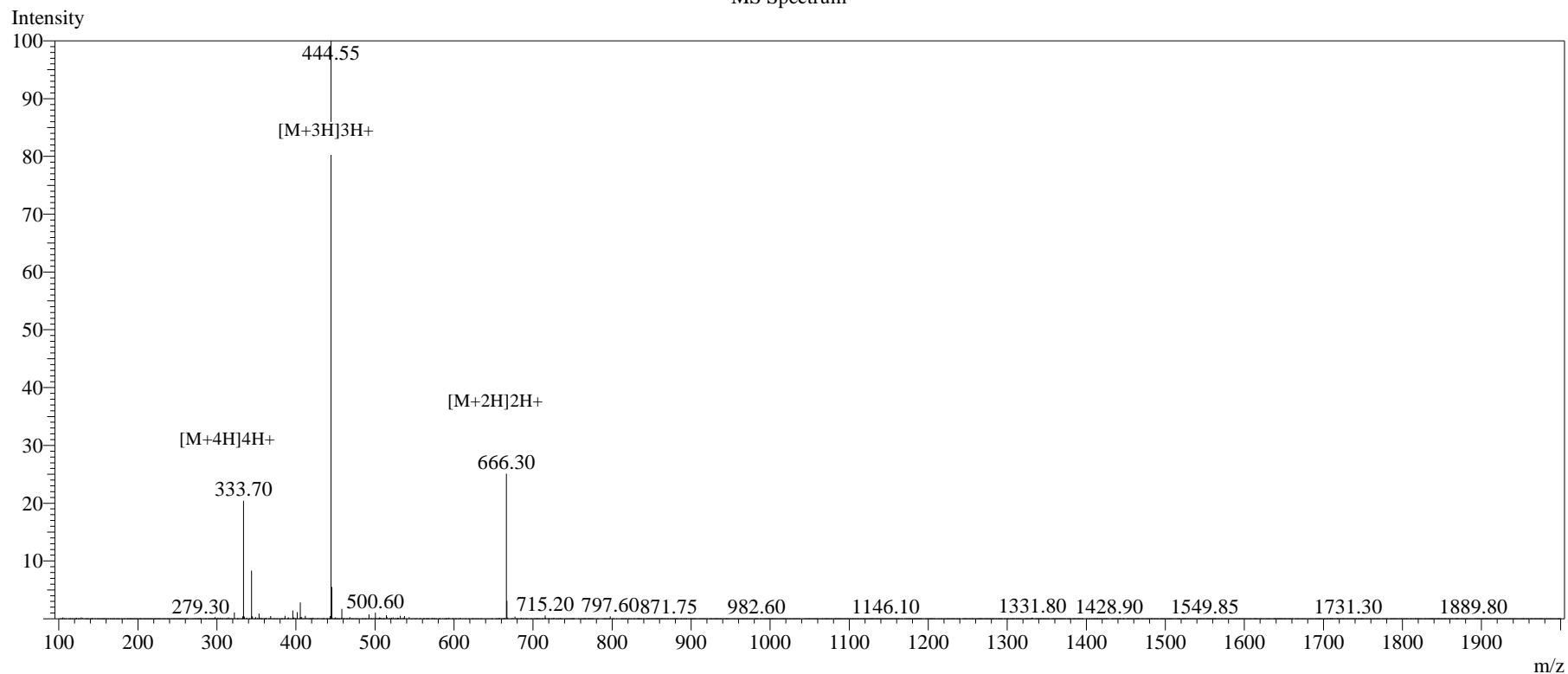


Peak Table

Detector A 214nm

Peak#	Ret. Time	Area	Height	Area%
1	13.288	10769	1184	0.058
2	15.512	65009	2149	0.352
3	16.267	18287861	1796828	99.136
4	17.193	62062	2768	0.336
5	19.165	1742	263	0.009
6	21.658	19793	2417	0.107
Total		18447237	1805608	100.000

MS Spectrum



Sample Information

Dissolution method :15% ACN+85% H₂O
 Date Acquired :2024/11/14 15:14:21
 Injection Volume :0.2ul
 Block Temp :200

Interface :ESI
 Nebulizing Gas Flow :1.50L/min
 CDL Temp :250°C
 CDL Volt :0v

Prerod Bias :+4.5kv
 Detector :-0.2kv
 T.Flow :0.2ml/min
 B.conc :50% H₂O/50% MEOH

Order ID :MTFA32080
 Name :W379 peptide
 Sequence :RRRWWWV
 Lot.No :MTFA32080-1111
 Theoretical :1330.55
 Observed :1330.65